



# Key ICP Sample Introduction Components: Selection & Optimization



## Presenter:

Dr. Maja Budanovic  
ICP Application Specialist,  
Glass Expansion GmbH  
Contact: mbudanovic@geicp.com

## Organized By:

Instrument Solutions Benelux B.V.  
Contact: info@instrument-solutions.com

**instrument**solutions  
*Technology for your success*

# Introduction: About Glass Expansion

- GE have been specializing in sample introduction components for ICPs since 1983
- Global recognition for manufacturing precision and reliability
- Approximately 100 staff
- Sales Offices Worldwide: Australia, USA and **Germany**
- **Official Distributor for Benelux: Instrument Solutions Benelux BV**



Glass Expansion - Europe  
Weilburg, Germany



Glass Expansion - Americas  
Cape Cod, Massachusetts



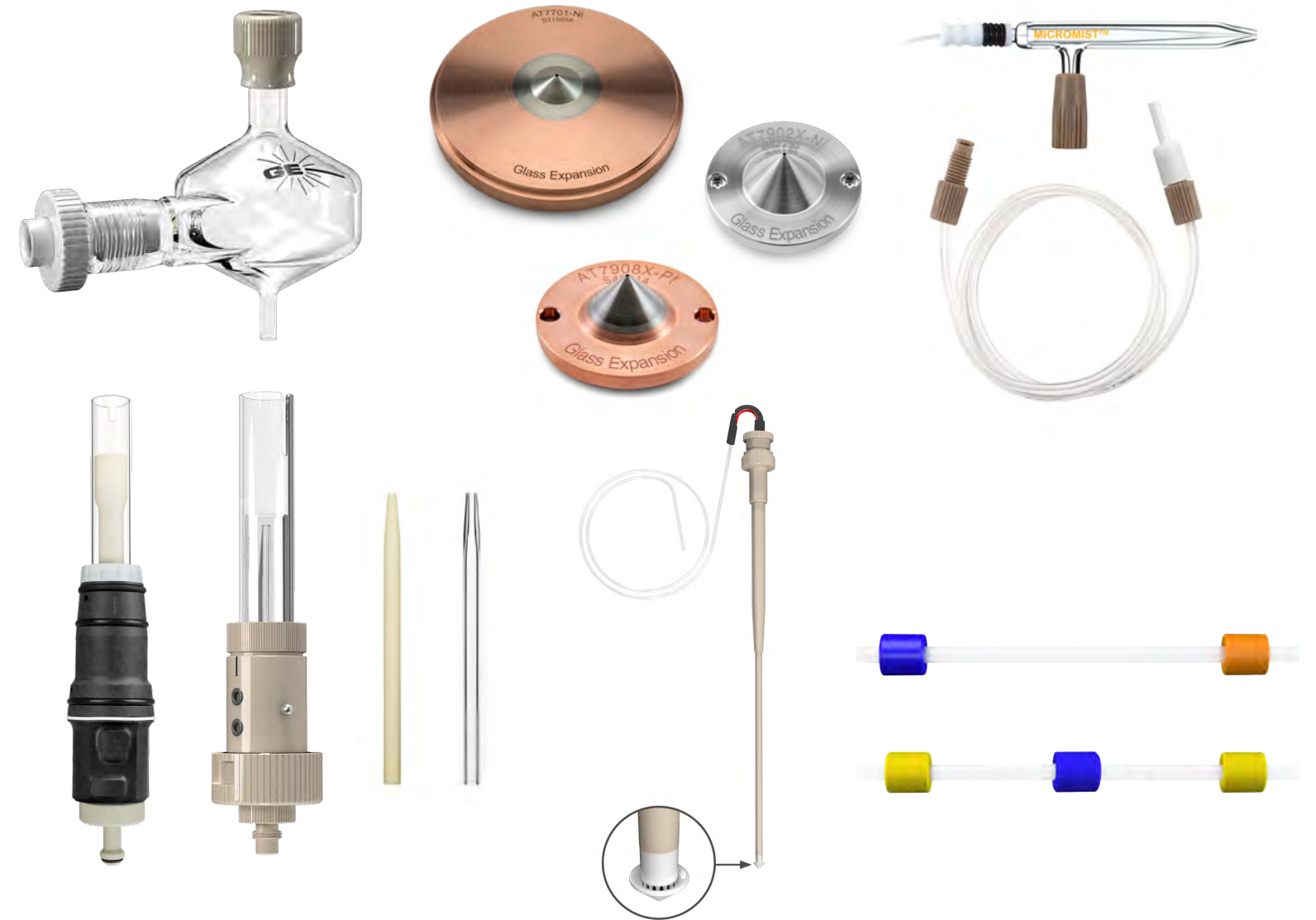
Glass Expansion – Asia-Pacific  
Melbourne, Australia

**instrument**solutions  
*Technology for your success*

De Liesbosch 50, 3439 LC Nieuwegein,  
Netherlands

# Product Lineup

- Autosampler Probes
- Pump Tubing
- **Nebulizers:** Custom-manufactured for optimal performance with each ICP
- **Spray Chambers:** Pioneered cyclonic design
- **Torches & Injectors:** Introduced the FDT
- Cones, RF Coils
- Other Accessories



**Manufacturers Supported:** Thermo®, Agilent®, PerkinElmer®, Shimadzu®, Spectro®, Analytik Jena®, Horiba®, Nu Instruments®, Others



# How is Glass Expansion Different?

**Our products are designed by our experienced R&D team:**

- Invest ~10% p.a. in R&D
- **Specialized equipment for Manufacturing:** Particle analyzers, Electron beam welders, Multiple CNC Machines, 3D Printing & Laser Technology

**We provide our customers with full technical support:**

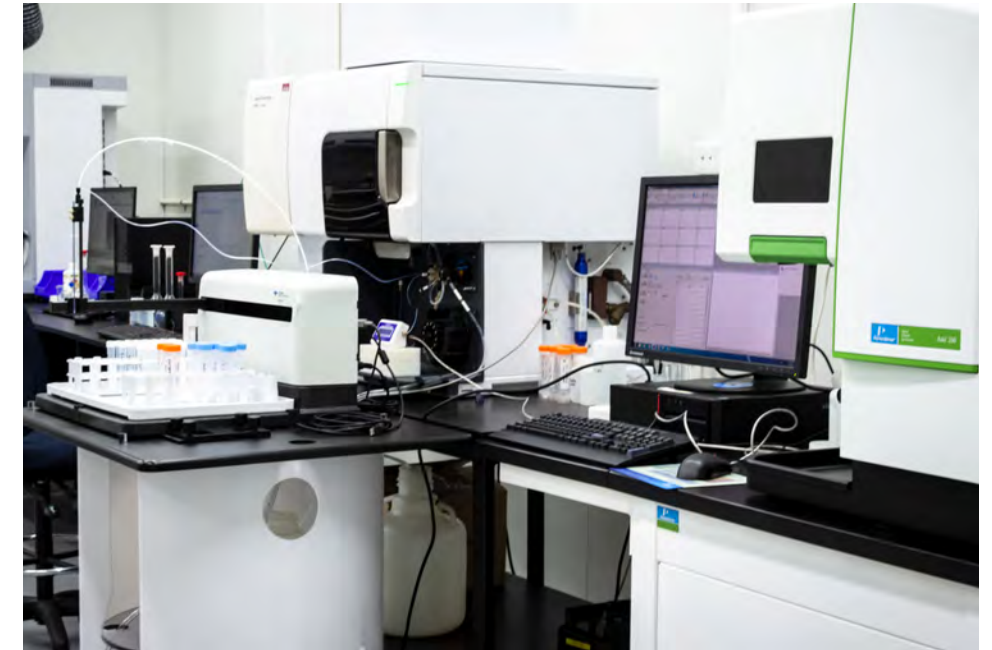
- Diverse industry/research partnerships
- **Extensivley equipped laboratory** with 6 in-house ICPs

**Quality Control:**

- Control the entire manufacturing process, from raw material to final product
- Manufactured to exacting specifications: **Guaranteed to meet/exceed OEM specifications**

**Glass Expansion Warranty:**

- All products are supplied with a **CUSTOMER SATISFACTION GUARANTEE**



# Overview of Key Components for ICP SIS

*The **sample-introduction area** has been called the **Achilles heel** of ICP because it is considered the weakest component of the instrument, with only 1-2% of the sample finding its way into the plasma.”*

The primary purpose of the SIS is to generate a **consistent aerosol** containing fine droplets:

**They key components of a SIS include:**

- **Sample Probe** (manual or autosampler)

*\*Teflon tubing connecting the sample probe to the persitaltic pump tubing*

- **Peristaltic Pump Tubing** (for sample and waste)

*\*Teflon tubing connecting the persitaltic pump tubing to the nebulizer*

- **Nebulizer**
- **Spray Chamber**
- **Torch + Injector**
- **RF Coil**
- **ICP-MS Cones**



# Sample Delivery System

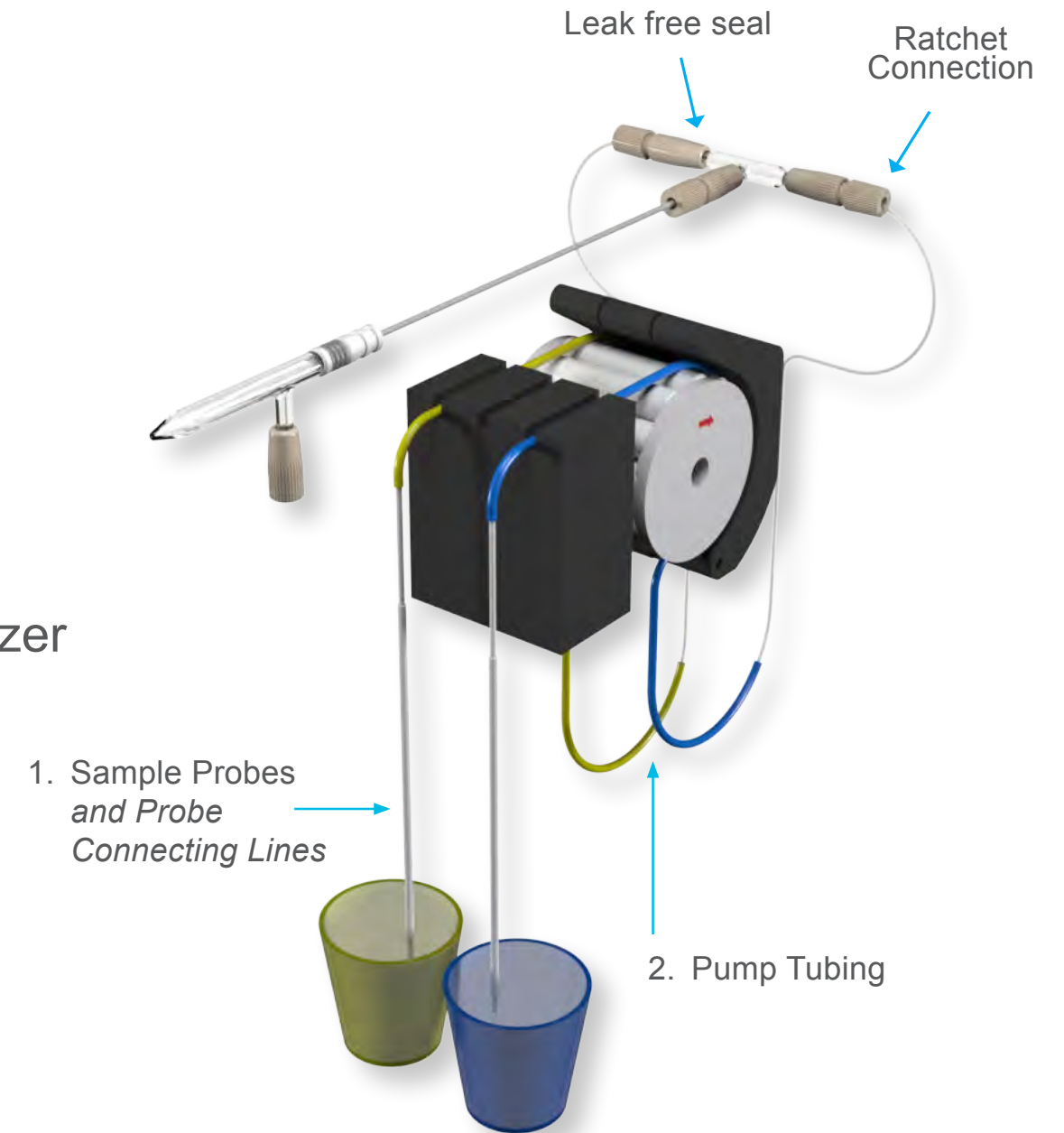
- **Sample Probe**
- **Peristaltic Pump Tubing**
- *Teflon connecting tubing*
- *Internal Standard Addition Kit*

## Key Functions:

- Consistent and accurate transport of the sample from its container to the nebulizer
- Allows for precise control over sample volume for reproducible measurements

## Common Challenges:

1. Ineffective Sample Digestion: Precipitates and undigested particles
2. Clogging and Blockages
3. Cross-Contamination
4. Sample Flow Issues: Variation in sample flow rate results in an unstable signal (poor RSDs)



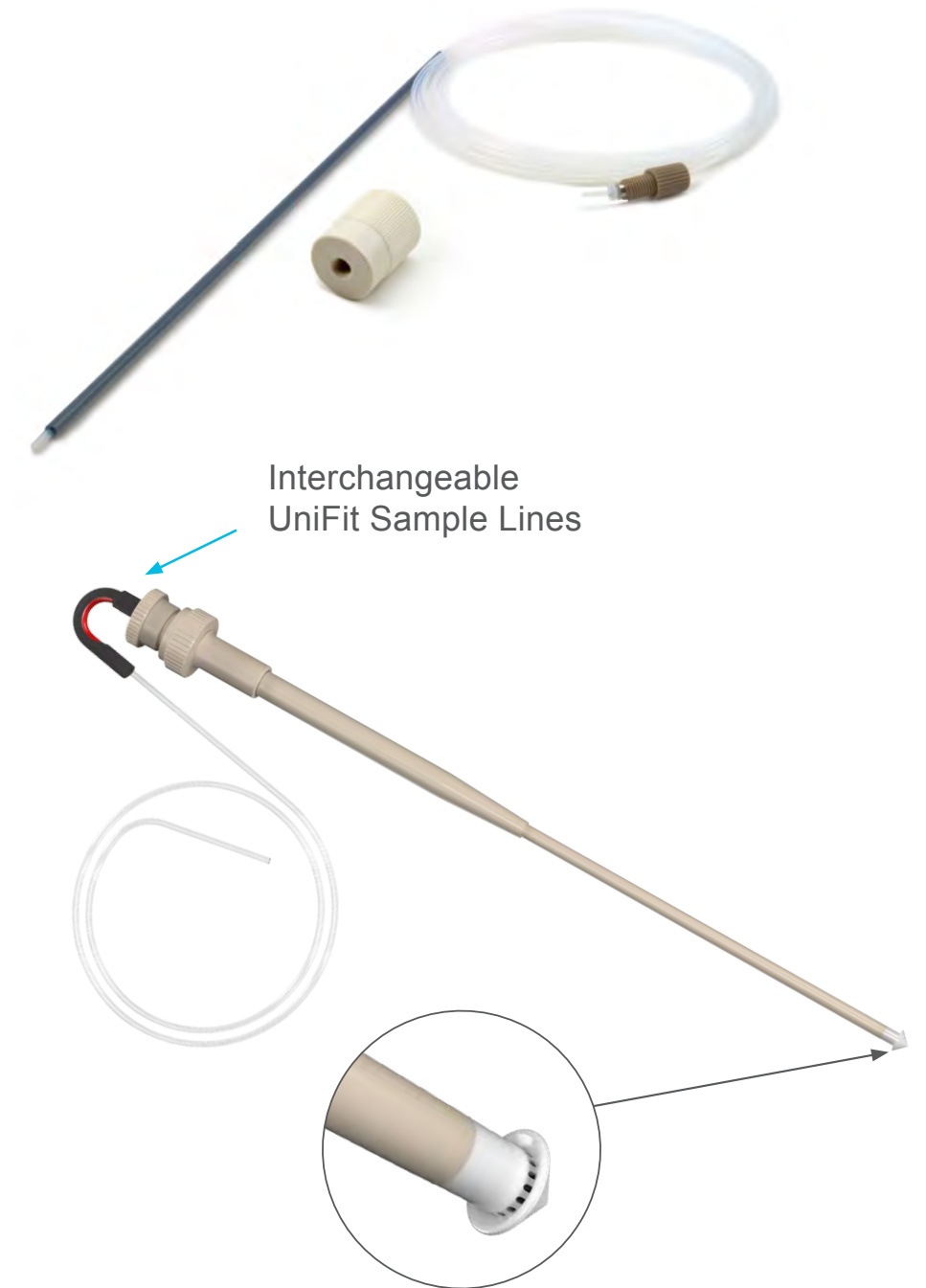
# Sample Probe: Selection

## 1. Standard Option: Carbon Fibre Probe

- Encapsulated carbon fibre tube with continuous PFA tubing
- Available for most common Autosampler models, with IDs of 0.50, 0.75 and 1.00 mm

## 2. Advanced Option: Guardian Autosampler Probe Features:

- **Robust tip** design prevents crushed and damaged tips due to misalignment
- **Combines drip-resistance and built in filter** to minimize cross-contamination, while protecting the nebulizer and capillary tubing
- **Completely inert design**, Ceramic, PEEK and PTFE construction
- **Interchangeable UniFit™ sample lines** IDs: 0.3, 0.50, 0.75 and 1.0mm
- **Autosamplers:** Teledyne Cetac, Perkin Elmer® S20, Shimadzu®, Aim and Agilent® SPS3/SPS4 autosamplers





# Guardian™ Autosampler Probe

Drip-resistance prevents cross contamination of samples, especially with oils:

## Customer Testimonials:

- Remarkable performance in environmental laboratories worldwide
- Unclogged operation even with particulate-containing samples
- **Significantly reduces nebulizer blockage** and downtime
- Enhances analytical efficiency





# Peristaltic Pump Tubing: Selection

*The pump speed together with diameter of the tubing, with cross-sectional area (mm<sup>2</sup>), determines the flow speed (mm/min), ultimately influencing the flow rate in mL/min.*

## 2-Tag/Stop vs. 3-Tag/Stop:

**3-Tag/Stop:** When one section wears out, a fresh section is ready to use, extending tubing life

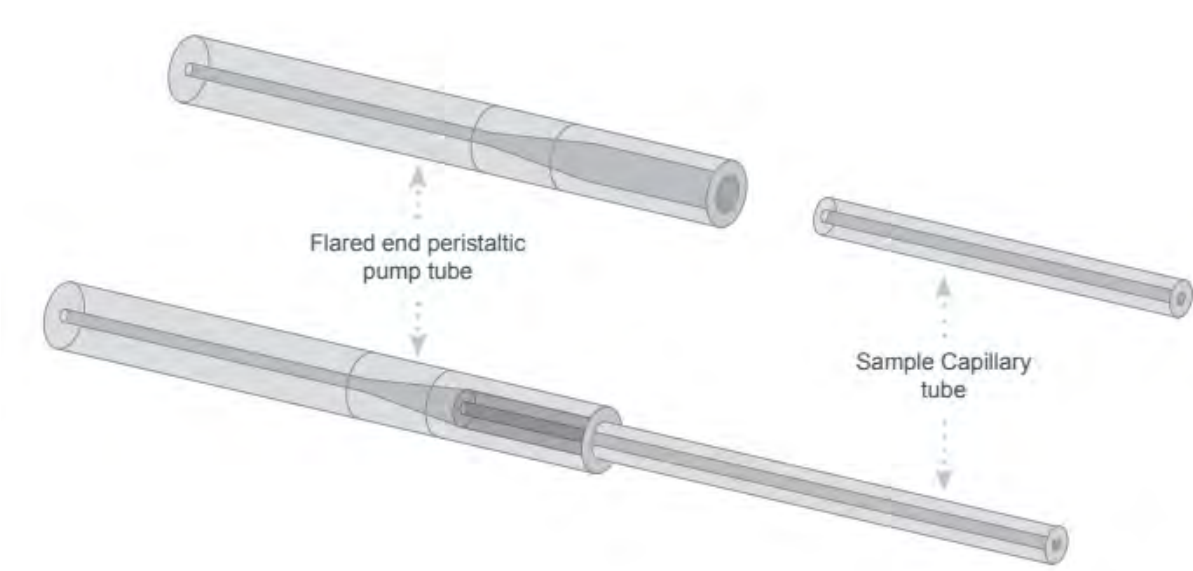
## Flared vs. Non-Flared Options:

**Flared-end pump tubing** makes it easier to insert larger sample capillary tubing

## Internal Diameter (ID):

**Smaller ID Tubing** (0.2-0.4 mm): Ideal for precise, low-flow applications

**Larger ID Tubing:** Suitable for higher flow rates and larger sample volumes



		Tag Colours	ID (mm)
		orange/black	0.13
		orange/red	0.19
		orange/blue	0.25
		orange/green	0.38
		green/yellow	0.44
		orange/yellow	0.51
		white/yellow	0.57
		orange/white	0.64
		black/black	0.76
		orange/orange	0.89
		white/black	0.95
		white/white	1.02
		white/red	1.09
		red/red	1.14
		red/grey	1.22
		grey/grey	1.30
		yellow/yellow	1.42
		yellow/blue	1.52
		blue/blue	1.65
		blue/green	1.75
		green/green	1.85
		purple/purple	2.06
		purple/black	2.29
		purple/orange	2.54
		purple/white	2.79
		black/white	3.17

# Sample Pump Tubing Selection

Tubing materials vary based on sample properties

Common materials include:

- **PVC Standard** (Tygon ST): Economical and suitable for most routine aqueous samples
- **Solva** (Tygon HC or Solvaflex): Special tubing for hydrocarbons, petroleum products and distillates
- **Tygon MH**: High-purity PVC; no additives or plasticizer; highly solvent-resistant (MIBK)
- **Viton** (Fluran): Fluoropolymerelastomer; special tubing for concentrated acids and corrosive solvents

Sample Matrix	Material	Colour	Not recommended
Aqueous	PVC/Tygon	Transparent	DMF, DMSO, Xylene
Premisolve, Oil, Xylene	Solva	Yellow	DMSO
DMF, DMSO	Viton	Black	

# Nebulizers

What are the common challenges encountered when using nebulizers?

## Application Suitability



- HF, high dissolved solids, and suspended solids
- Can lead to reduced DLs, extended washout times, and poor precision

## Blockages



- Loss of Sensitivity and Poor Precision
- ICP Backpressure  
Nebulizer test verifies nebulizer performance

Self-washing Tip

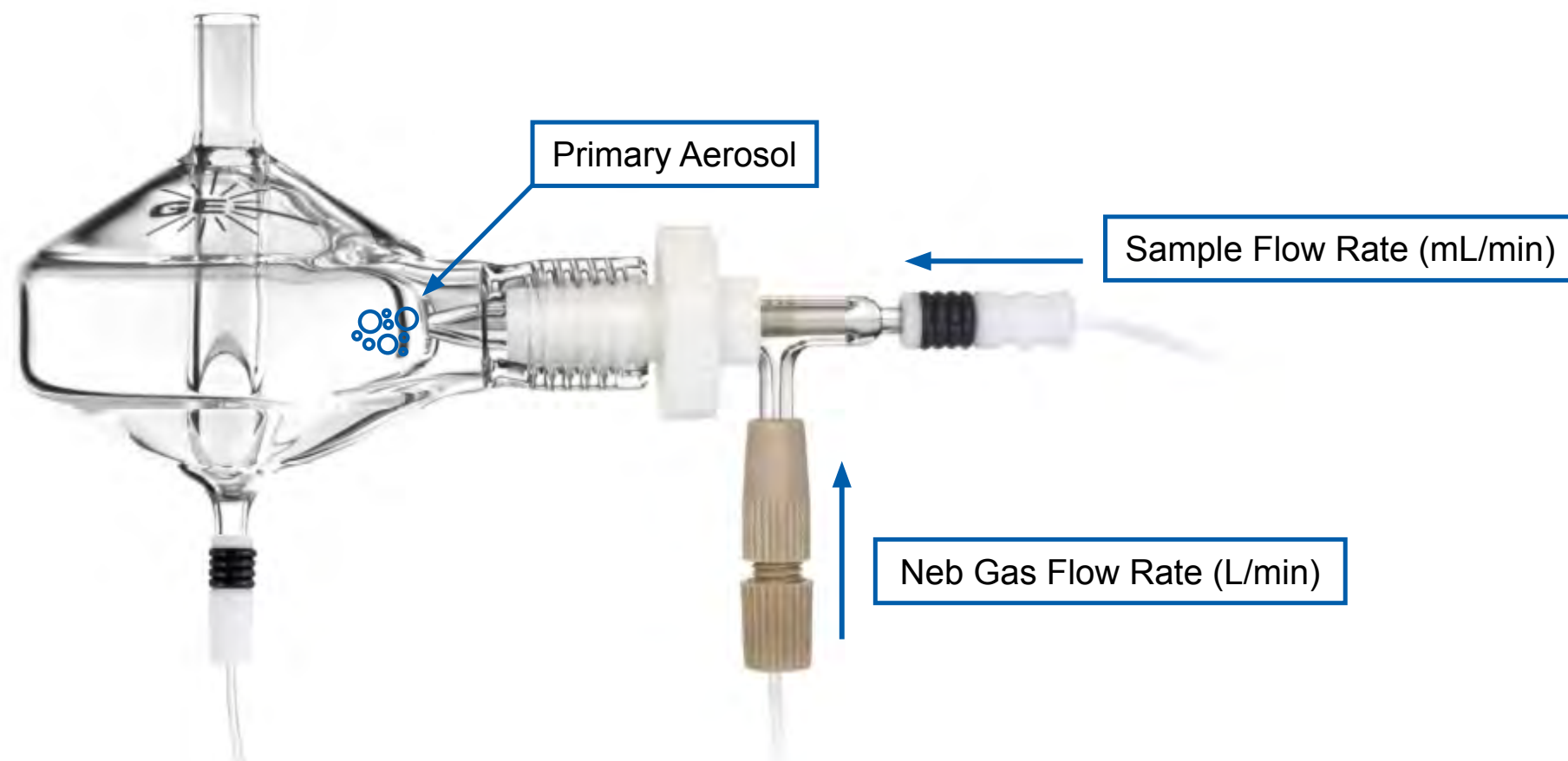


## Sample Cross-Contamination



- Poor connections
- Dead volume
- Affecting analysis accuracy

# Nebulizers: Primary Aerosol Generation



**Primary aerosol is produced by the nebulizer**

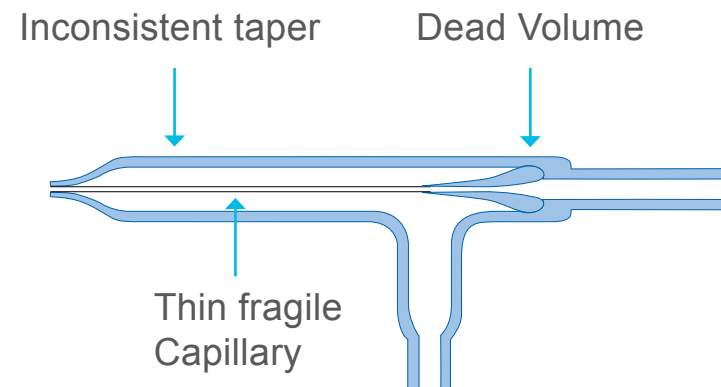
- Droplet size decreases as argon gas velocity increases and sample liquid flow rate decreases
- For optimal performance, **aim for a higher concentration of droplets with a diameter of  $<10\mu\text{m}$**

**Quality of Aerosol  $\propto$  Quality of Results**



# Concentric Nebulizers: Design Considerations

## Other Nebulizer Design:



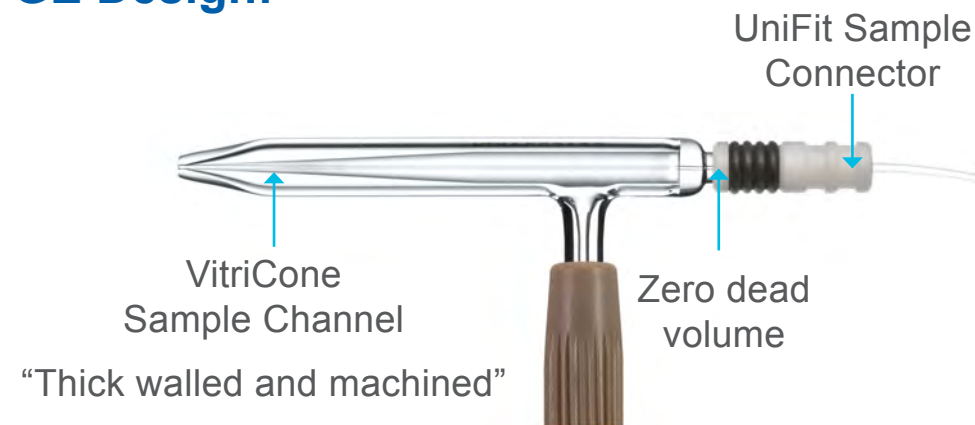
## Design Challenges:

All ICP Nebulizers are not created equal: they vary in quality, performance and consistency.

## Drawn-out capillary tubing design leads to:

- Narrowing, promoting salt buildup
- Fragility and vibration under high-speed argon flow, reducing precision
- Inconsistent taper affects seal and depth in the spray chamber
- Difficulty in achieving consistent performance across nebulizers

## GE Design:



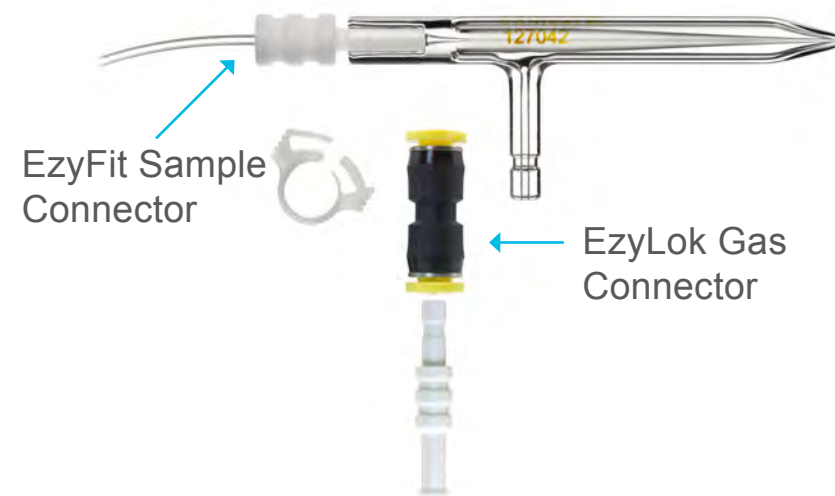
## GE DC Nebulizer Benefits:

- **VitriCone™ Technology:** Precision-machined heavy glass capillary ensures reliability
- **Clog-Resistant:** Uniform sample channel prevents particulate buildup
- **Stable & Reliable:** Rugged design minimizes vibration for improved precision

# Design Considerations: Nebulizer Sample and Gas Connector

Optimal connection solutions support achieving accurate and reproducible results:

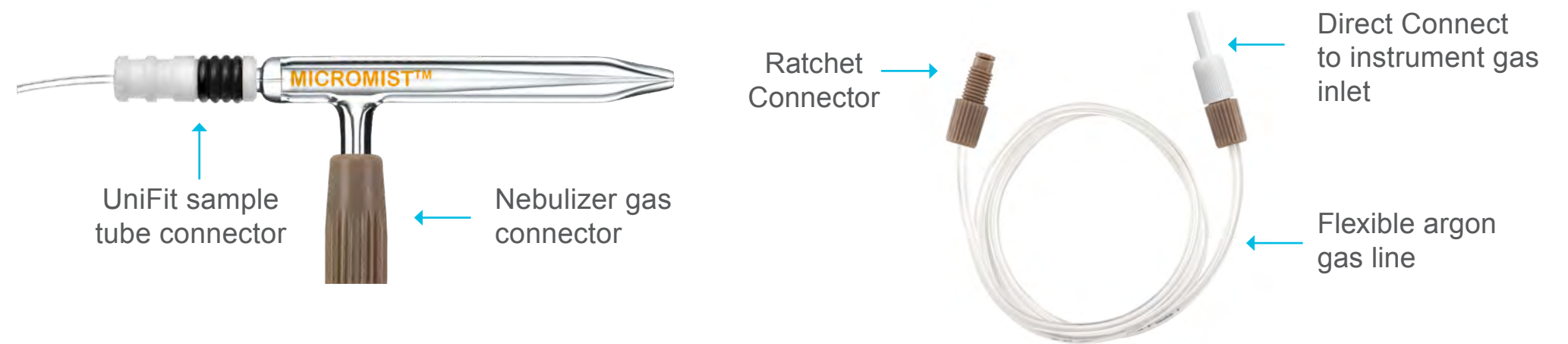
## GE Old Design:



## UniFit sample line connector:

- UniFit connector slides easily over the sample arm and creates an excellent seal
- Minimizes Dead Volume: Faster washout compared to EzyFit

## Industry standard DC Nebulizer design



## Inert metal-free argon connector:

- To prevent contamination and false positives (vs. EzyLok)

## Instrument-specific Direct Connect flexible argon line:

- Unlike hard tubing, which can restrict gas flow, the DC design ensures efficient, consistent gas flow
- **Reliable ratchet fitting:** Ensures leak-free gas connection

# Nebulizer Sample and Gas Connector Design



# DC Nebulizer Selection (I)

Concentric nebulizers are widely used for their efficiency, stability, ruggedness, and natural aspiration



**MicroMist™**

*The industry standard for ICP-MS*

Highest transport efficiency

Small droplet size

Limited sample volumes



**SeaSpray™**

*High Performance and Tolerance*

Optimal for samples with high TDS  
(seawater, brines, plating baths)

**Unique Self-washing tip**



**Conikal™**

*Standard option for ICP-OES*

Ideal for samples with only moderate  
concentrations of TDS, no particulates,  
and no HF



# DC Nebulizer Selection (II)



## **DuraMist™**

***Ideal for HF and High TDS Samples***

Inert nebulization for precise and high sensitivity analysis



## **OpalMist™**

***High Purity ideal for ICP-MS***

Low background levels, ideal for high-precision and ultra-trace analyses



## **VeeSpray™**

***Robust Ideal for High Matrix and Particulates***

V-groove design  
Analyses that require the greatest resistance to large particulates

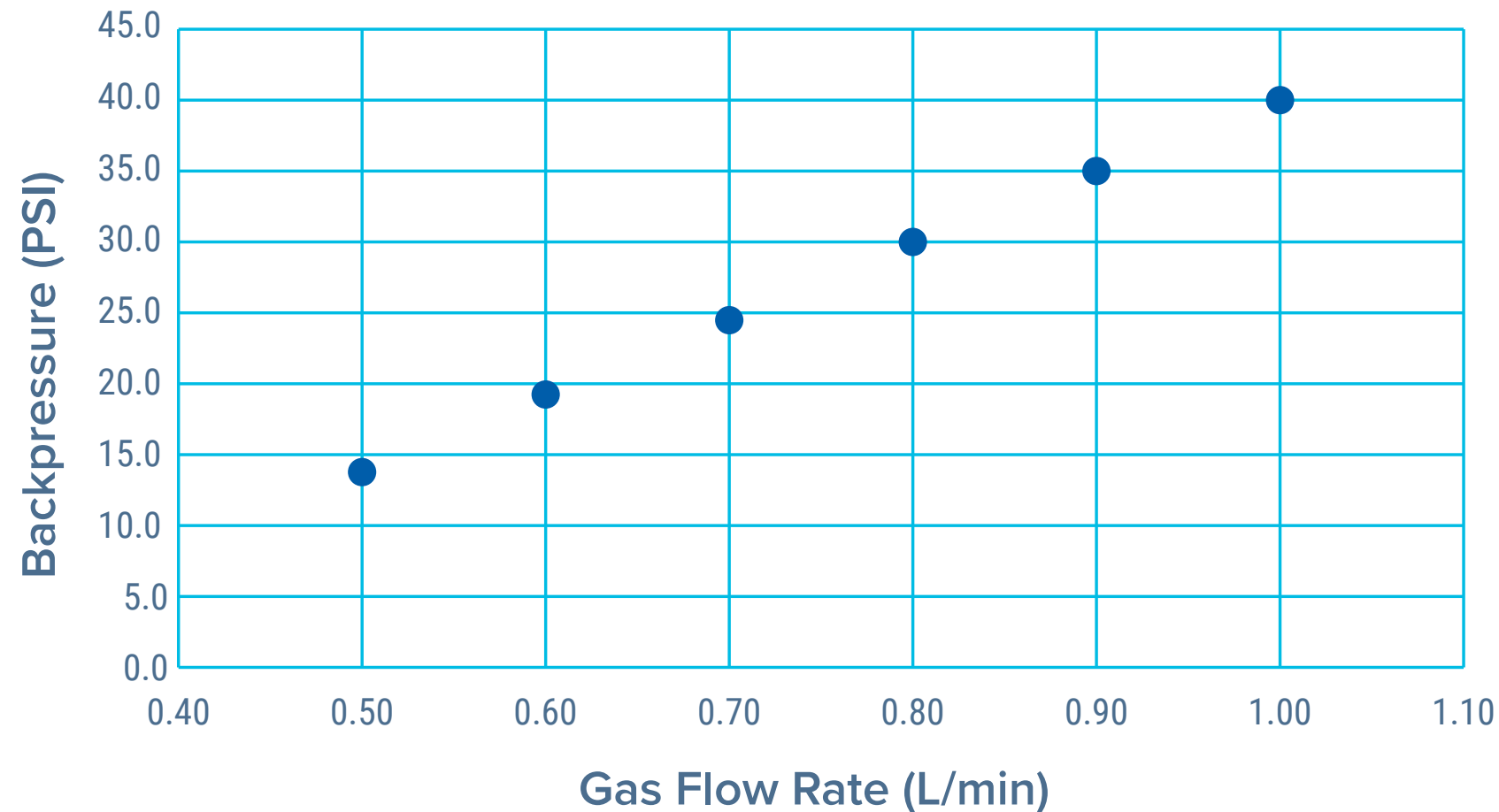
# DC Nebulizer Selection (III)

Selecting the right nebulizer requires careful consideration of various factors:

Nebulizer		TDS (%)	Particulates (µm)	HF	Precision	Purity	Material
SeaSpray™		20	75	No	High	Good	Glass
MicroMist™		15	40*	No	High	Good	Glass
Conikal™		5	75	No	High	Good	Glass
Slurry™		1	150	No	High	Good	Glass
Quartz SeaSpray™		20	75	No	High	Excellent	Quartz
OpalMist™		15	75*	Yes	High	Excellent	PFA
DuraMist™		30	75*	Yes	High	Good	PEEK
VeeSpray™		30	300	Yes	Moderate	Good	Ceramic

# DC Nebulizer Selection (IV)

Backpressure (PSI) Gas Flow Rate (L/min)



## Important Nebulizer Operating Parameters

Example: GE P/N A13-1-UM04

- Optimum nebulizer gas flow = 1.0 L/min (40 psi)
- Sample uptake rate  $\leq 0.4$  mL/min

# Spray Chambers: Introduction

What are the common challenges encountered when using spray chambers?

## Application Suitability



- HF
- Organics
- Limited volume samples

## Transport Efficiency



- Loss of Sensitivity
- Poor Precision and Accuracy
- Inconsistent Signal Stability

## Long washout Carryover



- Poor Precision
- Dead volume
- Compromised analytical results

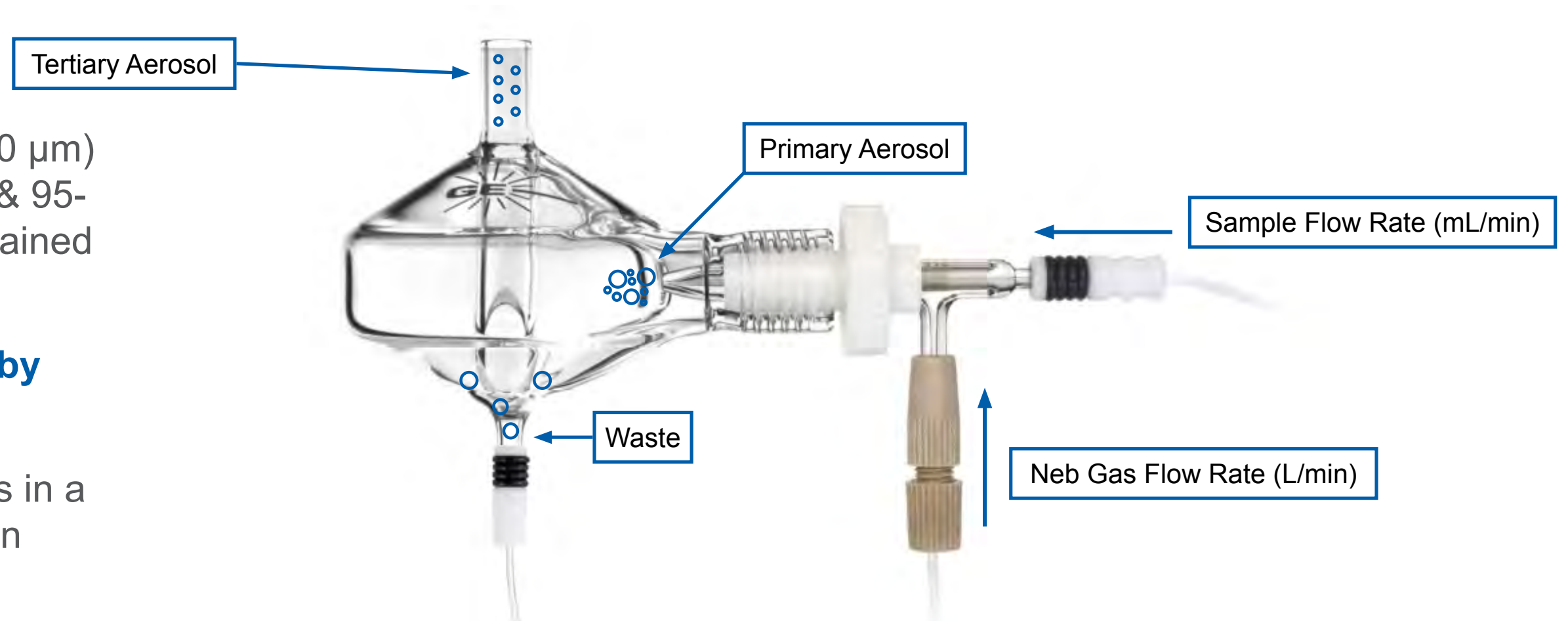
Profound Effect on: **Transport Efficiency, Precision, and Washout**



# Spray Chambers: Tertiary Aerosol Generation

Only the smallest droplets ( $<10\ \mu\text{m}$ ) are transmitted to the plasma & 95-98% of nebulized sample is drained as waste

- **Tertiary Aerosol “filtered” by Spray Chamber,  $<10\ \mu\text{m}$**
- Less energy required, results in a more robust plasma condition

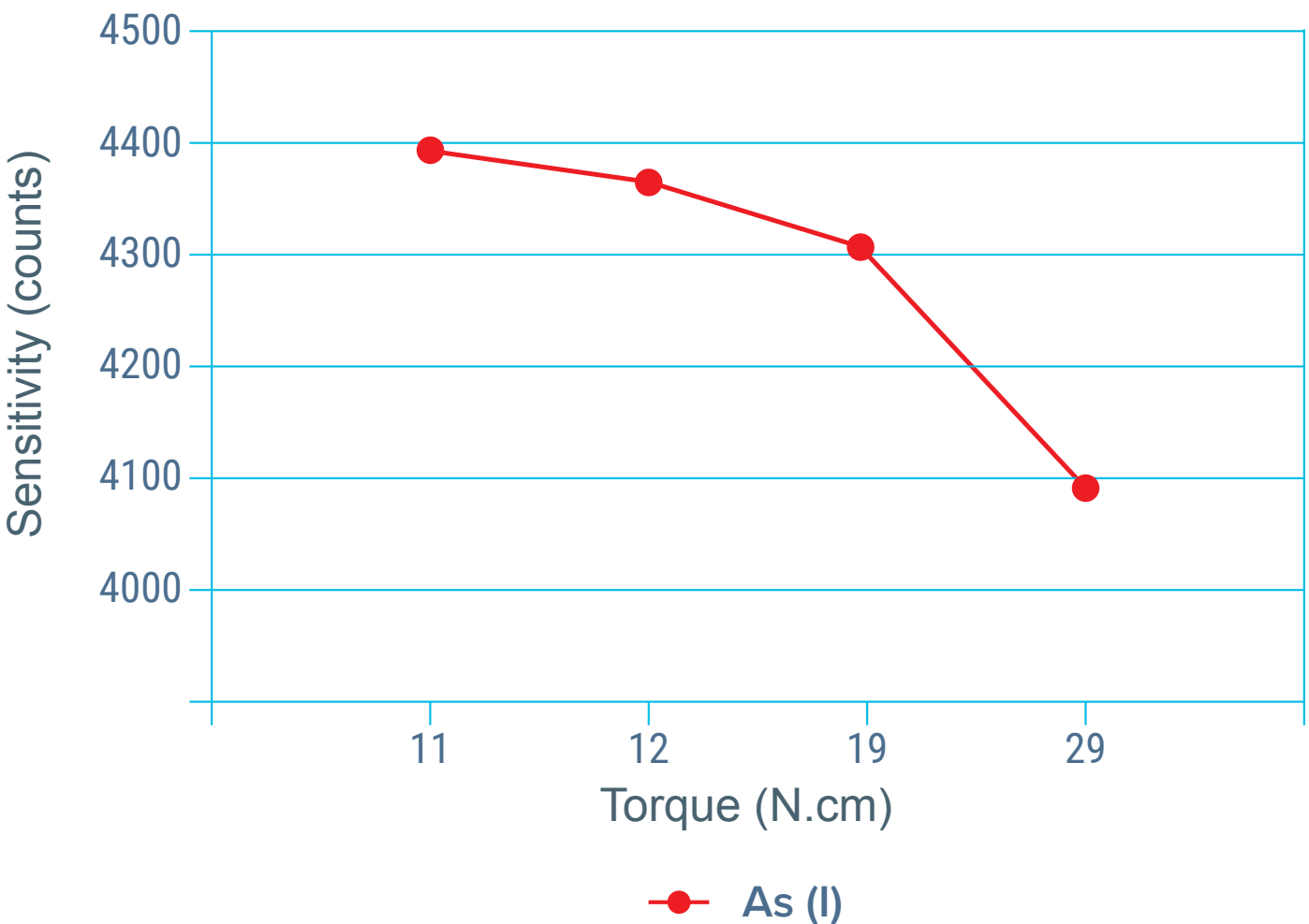


Smaller Droplets Require Less Energy = Efficient Ionization

# Spray Chambers: Helix CT Interface (I)

Helix CT: Constant Torque = Reproducible day-to-day ICP Performance

## Optimum Sensitivity



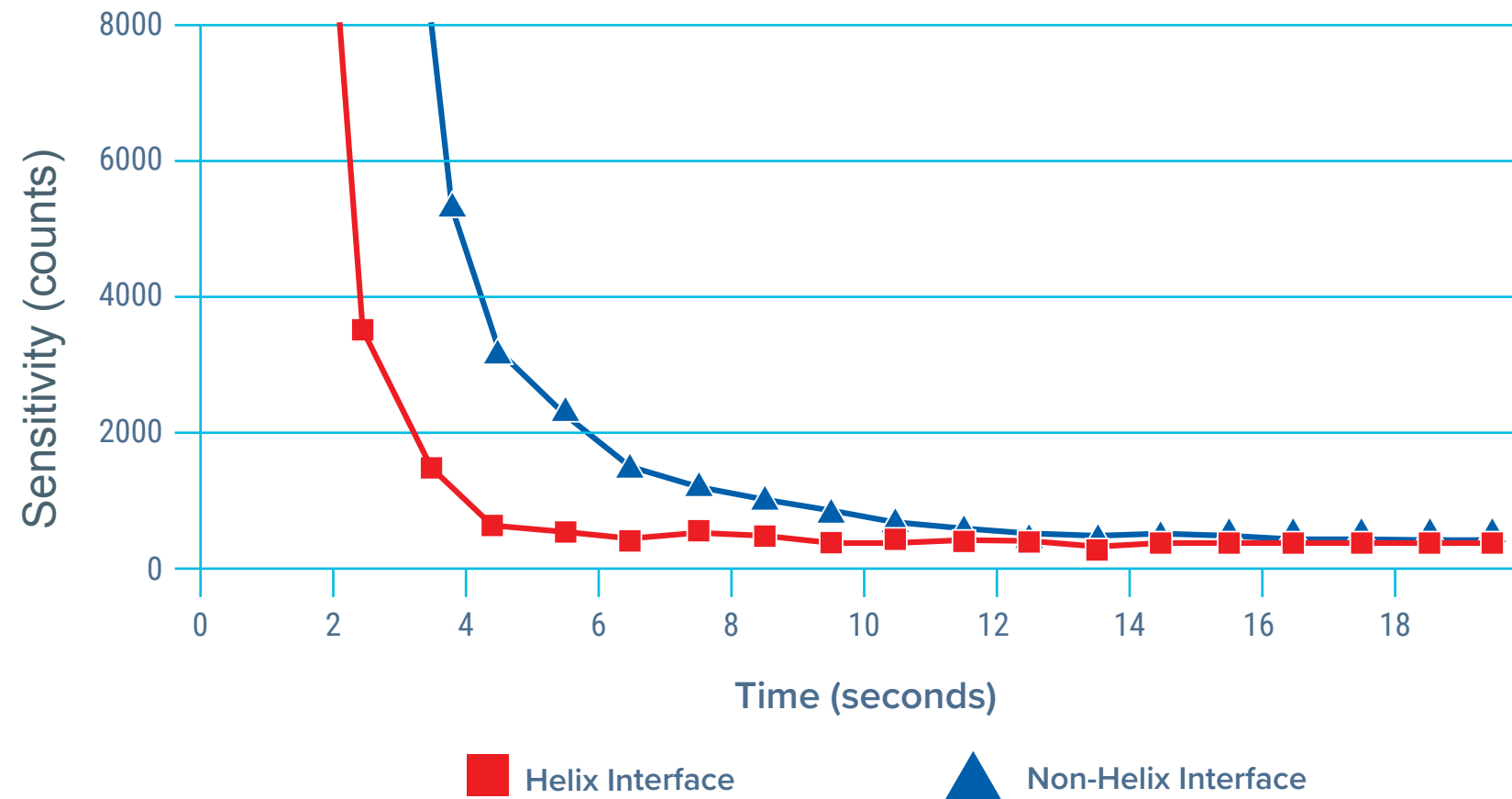
- Helix locking screw with CT technology allows for a consistent inert PTFE seal against the nebulizer - making it impossible to overtighten while ensuring a gas-tight seal every time

## Built-in torque control mechanism



# Spray Chambers: Helix CT Interface (II)

## Improved Washout



## Drawbacks of an O-ring Seal:

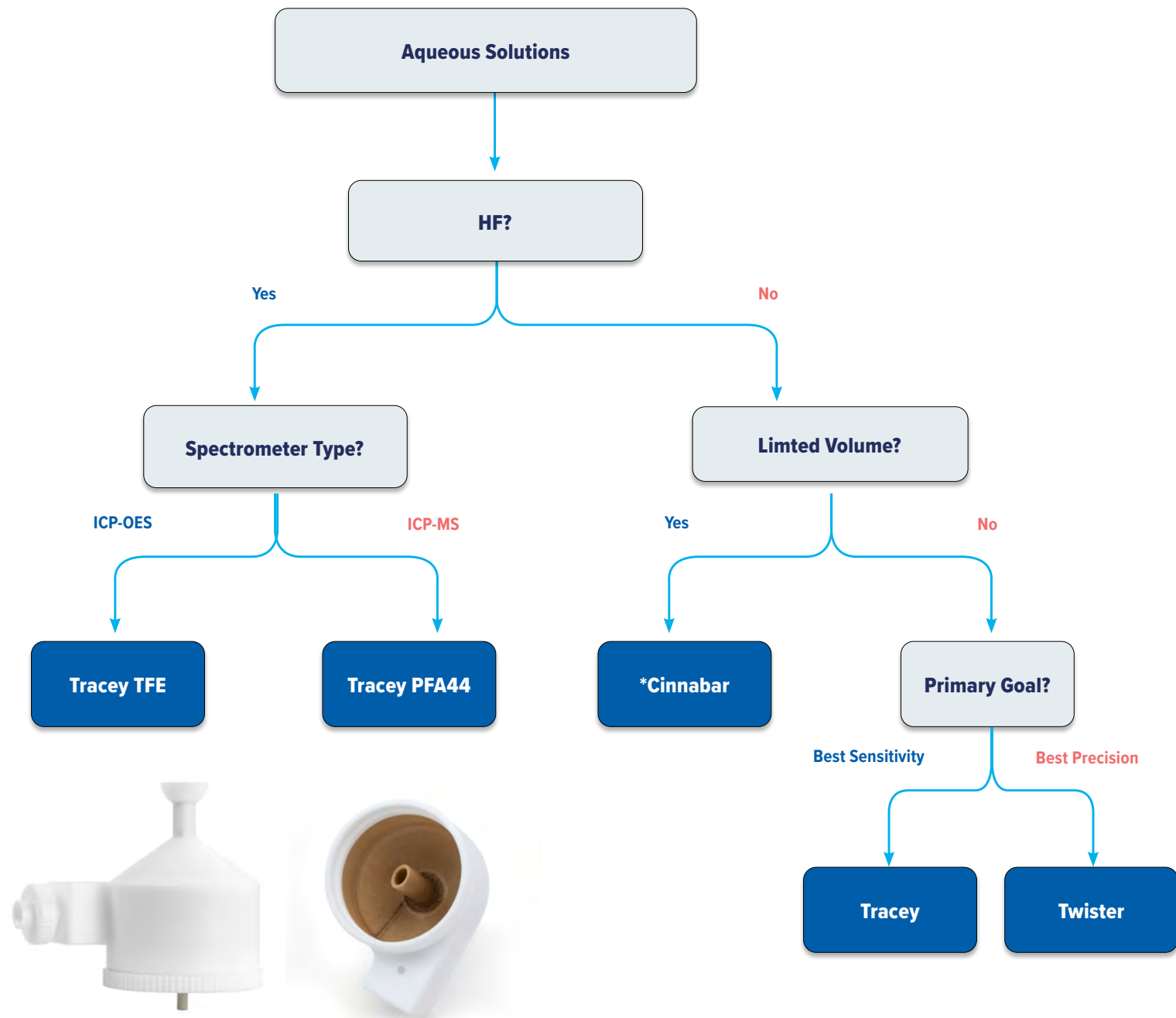
- **Contamination:** Dead volume around the O-ring can trap contaminants
- **Chemical Resistance Limitations:** O-rings may degrade with strong acids or organic solvents
- **Difficult Maintenance & Fragility**



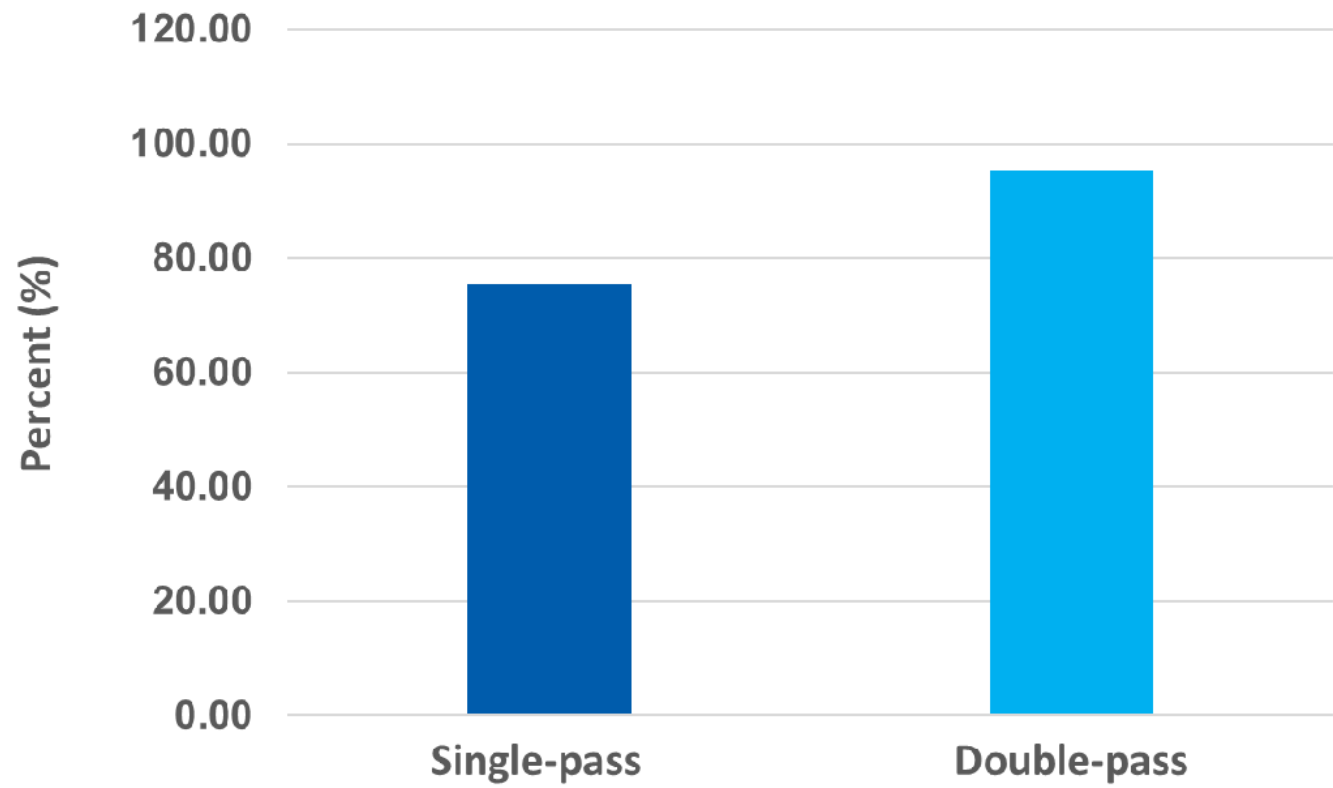
Non-Helix Interface

# Spray Chambers: Selection

Profound Effect on: Transport Efficiency, Precision and Washout



Percentage of Volume < 10µm

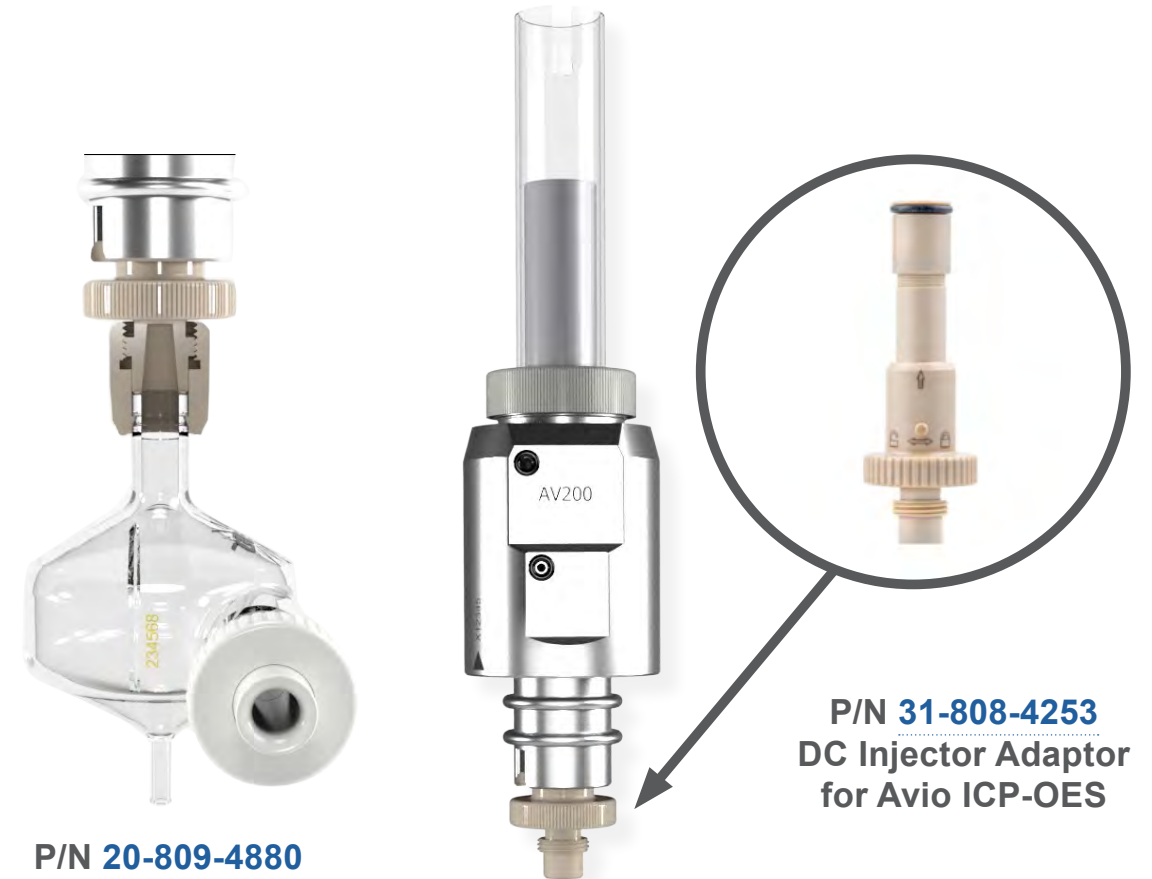




# Latest Design: Direct Connect (DC) Spray Chambers

## Features & Benefits:

1. **Inert DC Connection:** PEEK Construction ensures durability and chemical resistance. No ball joint clamps that corrode over time
2. **Consistent Alignment:** Provides precise alignment for enhanced accuracy and efficiency
3. **Efficient Washout:** 30mL low-volume cyclonic chamber with Helix CT technology
4. **Cost-Effective:** More affordable than traditional glass spray chambers
5. **Wide Compatibility:** Fits most common ICP-OES models with E-Torch, D-Torch, and SDT/ FDT



# DC PEEK Spray Chamber

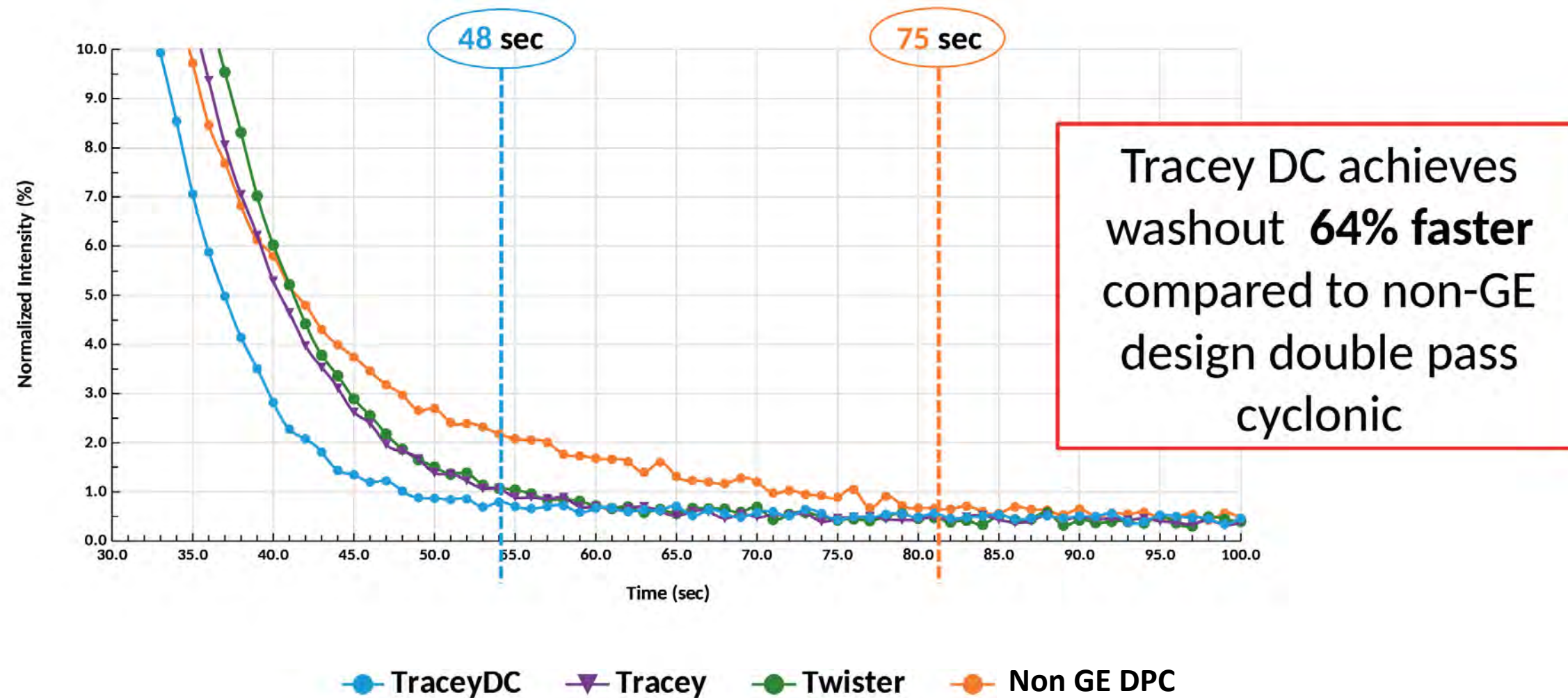
## Benefits of Tracey DC PEEK Spray Chamber:

- HF resistance up to 5%
- **Excellent wetting characteristics** of PEEK ensure the wetting properties are retained with general maintenance
- Spray chamber **doesn't require internal surface treatment** compared to TFE or PFA spray chambers
- Lower cost structure vs other HF spray chambers
- No metal clamp required



# Direct Connect (DC) Spray Chambers

## Washout Profiles for 1 ppm Hg:



# Temperature Controlled Spray Chambers

## Limitations of Room Temperature Spray Chambers

1. Sensitivity drift as temperature changes
2. Excessive plasma loading (volatile organics)
3. Excessive oxide formation (ICP-MS)
4. Insufficient control of analyte transport

### Option 1. IsoMist MS™:

Currently Agilent® 7850/7900/8900



### Option 2. PCC™:

Agilent® ICP-MS



### Option 3. IsoMist XR™:

All ICP-OES/MS

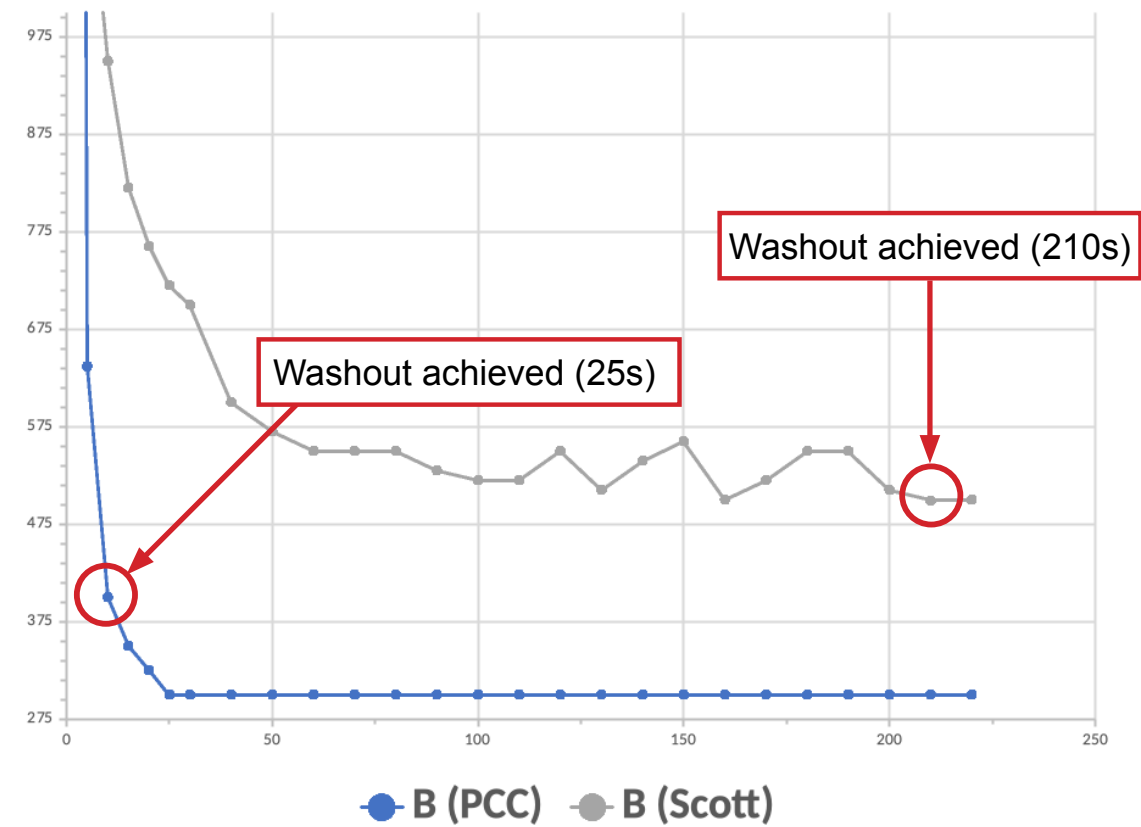




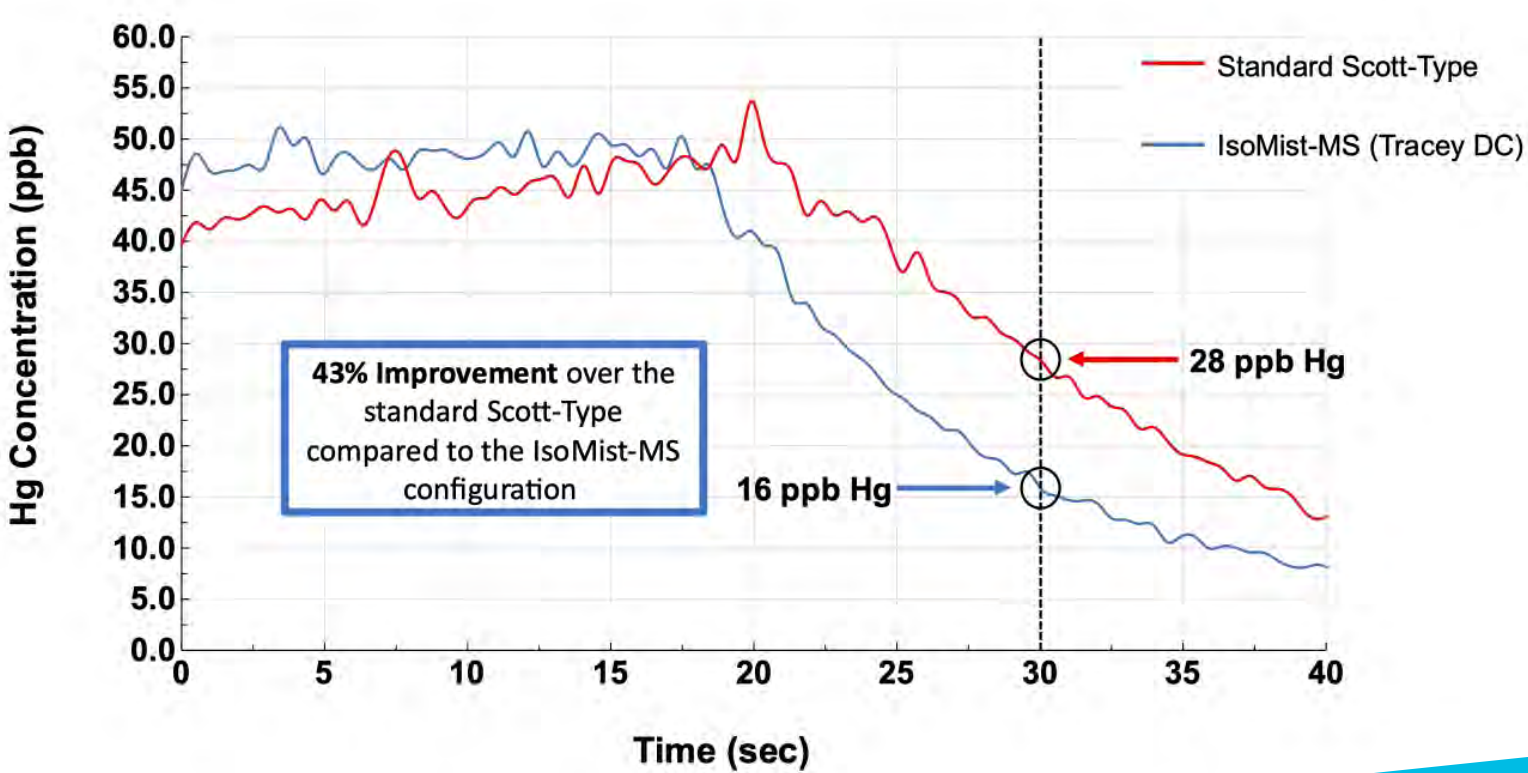
# ICP-MS Spray Chambers: Washout Comparison



Washout Performance (200 ppb Boron)



Washout Performance (50 ppb Hg)





# The PCC™ Spray Chamber

## Benefits:

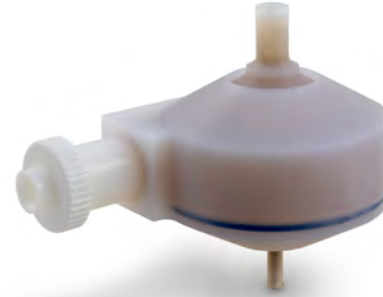
- Minimizes washout time with highly concentrated samples and troublesome elements, such as B, Hg, Pb and Sb compared to the Scott-style spray chamber
- Interfaces directly to the existing electronics and water-cooling system of Agilent ICP-MS
- Compatible with Agilent HMI and UHMI
- Compatible with Agilent ISIS-3



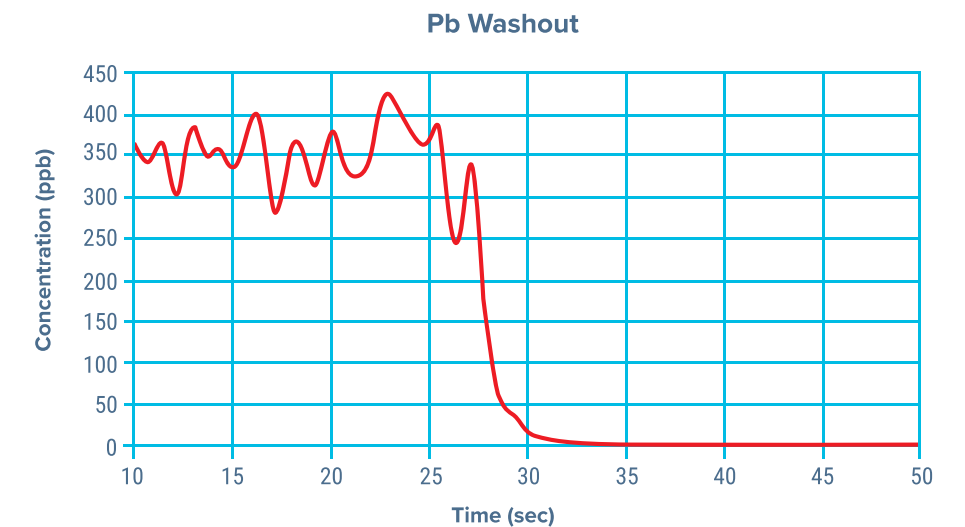
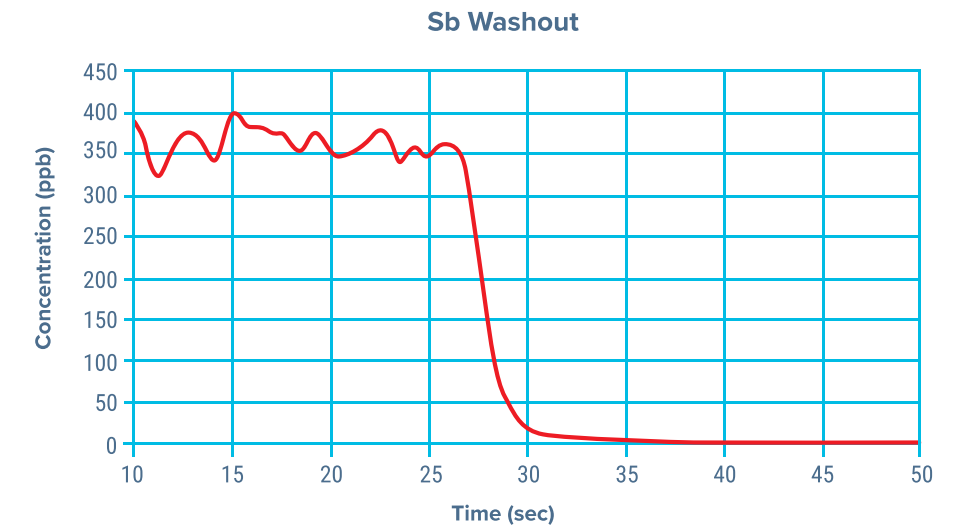
Glass Tracey™ with Helix CT



Quartz Tracey™ with Helix CT



PFA Tracey™ with Helix CT

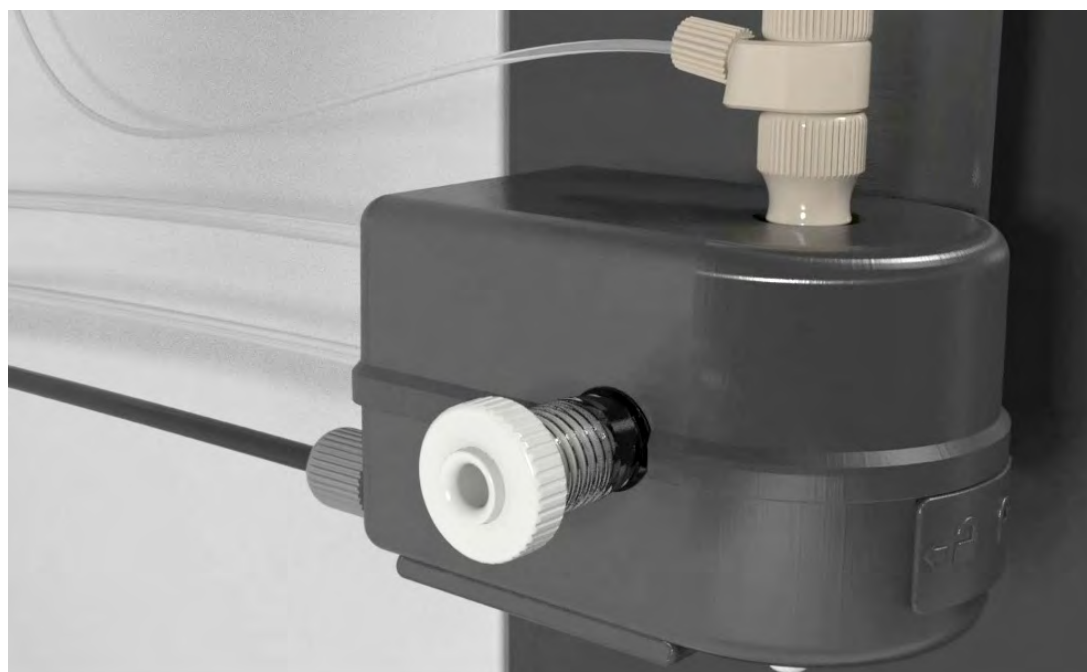
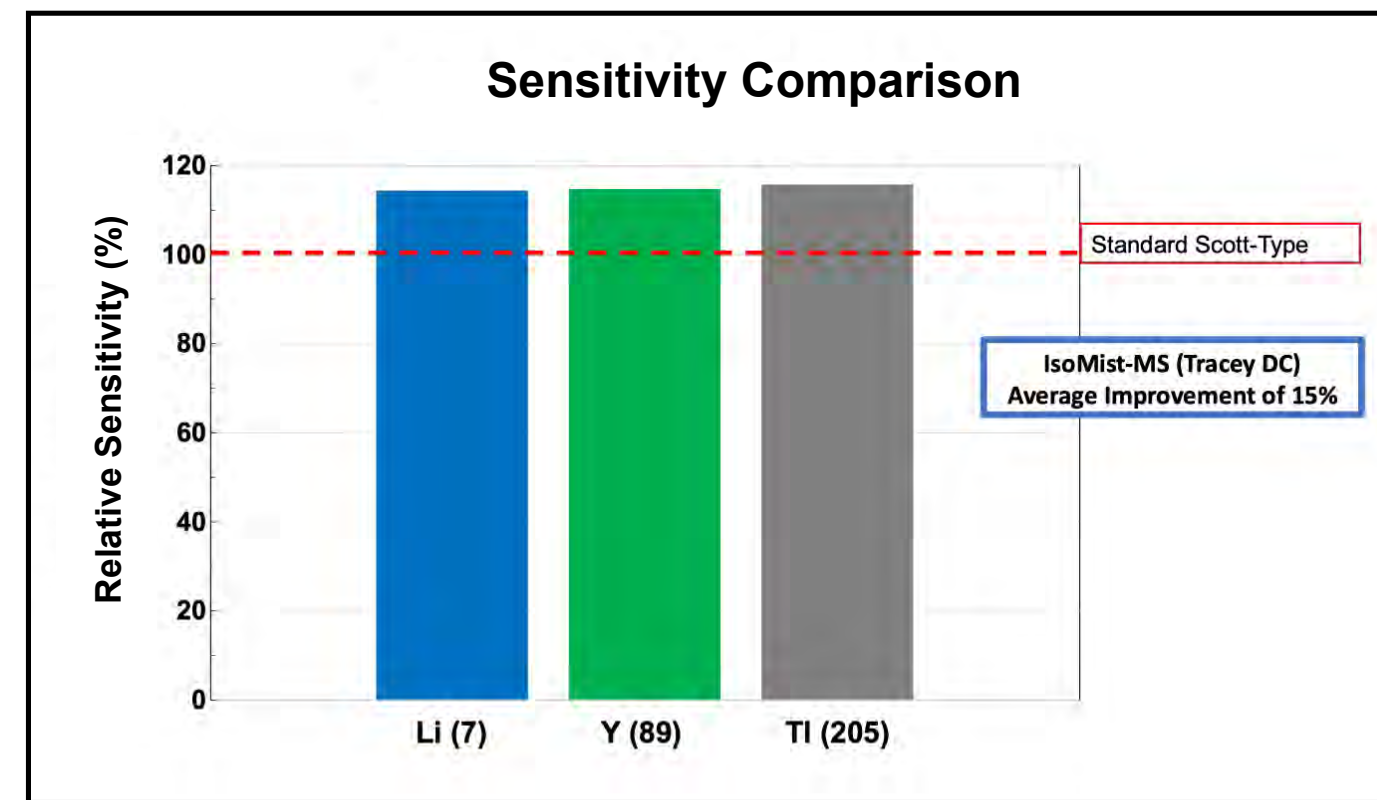


**GLASS EXPANSION**  
Quality By Design

# The IsoMist MS™ Spray Chamber

## Benefits:

- Next Generation IsoMist-Compact
- **DC (Direct Connection) Spray chamber (Glass, PEEK)**
- Low volume (30mL) cyclonic spray chamber for faster washout
- Improved transport efficiency with reduced sample path length
- Compatible with UHMI or HMI conditions



# Thank You



# A Practical Guide to ICP Ionization & Interface Components



## Presenter:

Dr. Maja Budanovic  
ICP Application Specialist,  
Glass Expansion GmbH  
Contact: mbudanovic@geicp.com

## Organized By:

Instrument Solutions Benelux B.V.  
Contact: info@instrument-solutions.com

**instrument**solutions  
*Technology for your success*

# Torch (& Injector)

What are the common challenges encountered when using ICP Torch?



## Application Suitability

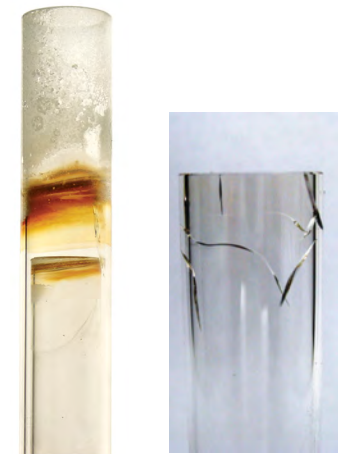
- HF
- Organics
- High TDS

## Poor analytical Performance

- **Loss of Sensitivity:** Blocked injector in torch
- Poor Plasma Stability
- **RF coil alignment:** to reduce devitrification

## Care & Maintenance

- **Effects of Harsh Matrices:** High TDS; Organics
- Worn or deformed torch
- Devitrification





# Torch (& Injector)



## ICP Torch Designs:

### 1. Single piece quartz torch:

- General use torch: Lower initial cost structure with no removable parts

### 2. Semi-demountable torch:

- Enables injector interchangeability without torch replacement
- Removable torch body (intermediate tube and outer tube one-piece)

### 3. D-Torch:

- Removable: injector, outer tube

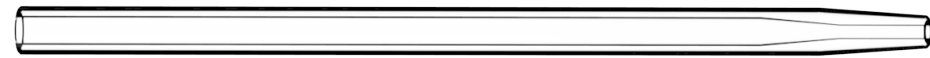
### 4. Fully demountable torch (FDT):

- Removable: injector, intermediate tube, outer tube

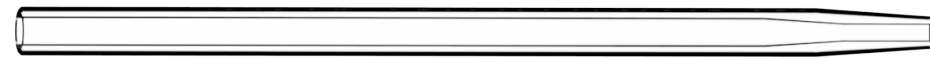
# Multiple Applications with a Single Torch



- Narrow bore quartz, **1.0mm** or less for volatile organics



- **1.5 to 2.0mm** quartz for standard aqueous matrices



- Large bore quartz, **2.0mm** or greater for high TDS



- High grade **alumina for HF** containing samples



- Sapphire for ultra high purity and HF

- *Pt tipped and Sialon injectors are also available for some D-Torch models and by request*

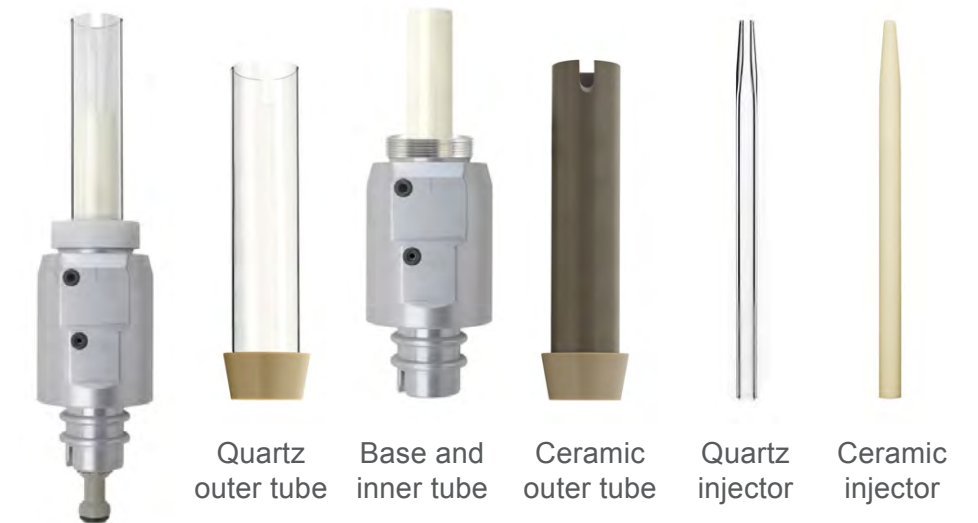
# GE D-Torch – Demountable Torch

*The D-Torch is a cost-effective alternative for any laboratory with a moderate workload.*

## Benefits

- **Extended Lifespan:** Designed for aggressive sample matrices, reducing frequent torch replacements
- **Cost Efficiency:** Replace only the outer tube (fastest to degrade), lowering operating costs
- **Versatility:** Compatible with various sample matrices, eliminating the need for multiple torches
- **Lower Detection Limits:** High-purity ceramic minimizes background, enhancing silicon detection
- **Alumina intermediate tube**, which resists wear and is tolerant to high temperatures, high TDS and acid attack
- In contrast, **other demountable torch designs typically feature quartz intermediate tubes**, which add to consumable costs and diminish economic benefits

*\* The D-Torch is covered by US Patents*



For PerkinElmer® Avio



For Agilent® 5100/5110/5800/5900

# GE D-Torch – Demountable Torch

The D-Torch is a cost-effective alternative for any laboratory with a moderate workload.



## Glass Expansion D-Torch Assembly Guide

For Agilent® 5100/5110/5800/5900



# GE D-Torch – Ceramic

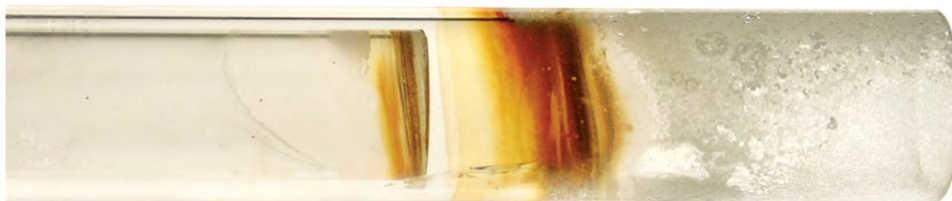
D-Torch with ceramic outer tube is ideal for:

- Analyses at the detection limit as the hotter plasma increases sensitivity
- Monitoring of wear metals in engine oils, as quartz outer tubes often suffer cracking and shortened lifetimes due to thermal shock
- **Measuring high TDS samples that will quickly devitrify the quartz outer tube**

“The D-Torch is performing very well. The ceramic outer has been in **almost constant service 22 hours a day**, 6 days a week since we purchased it and we have had no issues...We are due to purchase a replacement ICP and will certainly be purchasing another D-Torch to go along with it.”

- Lubricating Oils Laboratory

Six hours of running 10 % NaCl



Standard quartz torch body



Ceramic outer tube



# GE D-Torch – Ceramic: Improved Signal Intensity

Ceramic versus Quartz on Agilent® 5000 SDV ICP-OES.



Analyte	Ceramic Outer Tube	Quartz Outer Tube	% Increase
As	173	148	17
Cd	4259	3367	26
Co	1050	855	23
Cr	5490	4435	24
Cu	5258	4558	15
Fe	3408	2767	23
Mn	49529	40237	23
Mo	954	778	23
Ni	721	584	24
Pb	285	226	26
Sb	326	278	17
Se	102	90	13
Ti	185	146	27
V	4677	3815	23

# GE D-Torch – Ceramic: Improved Detection Limits

Detection Limit (µg/L)		
Element	Radial Quartz Torch	Radial Ceramic Torch
Al 167	1.6	1.1
Ba 455	0.07	0.12
Cu 324	0.88	0.62
K 766	25.5	11.7
Mg 279	0.05	0.05
Mn 257	0.36	0.25
Ni 221	1.6	1.3
P 177	5.1	5.0
Zn 213	0.23	0.28



**\*Thermo™ Application Note 43053**

# DC Adaptors for Different Torches



P/N 31-808-4253

P/N 31-808-4293

P/N 31-808-4408

P/N 31-808-4374

P/N 31-808-4489

# Latest Design: E-Torch

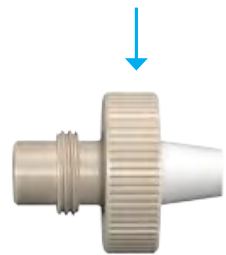
## Benefits

- Made from PEEK, PTFE & Quartz
- Shipped with P/N [31-808-2836](#), Capillary Quartz Injector 2.0mm (EMT)
- Interchangeable injectors, (Quartz, Ceramic, Sapphire)
- Compatible with Tracey™ DC spray chamber which eliminates ball joint clamps
- Performance equivalent to the D-Torch
- Ceramic tube set available on request for HF and high TDS applications
- **Low cost Inner and Outer tube assembly which simplifies deposit removal maintenance and allows for oven cleaning of Carbon deposits**
- Compatible with the Jet Vortex Interface (JVI)



P/N 30-808-4388  
E-Torch for Thermo® PRO

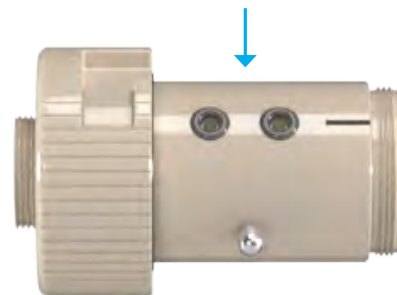
Torch DC Adaptor and Ferrule  
P/N 31-808-4499



Quartz Injector 2.0mm  
P/N 31-808-2836



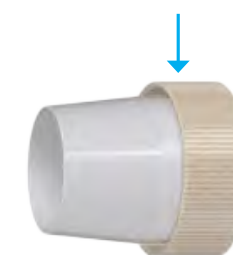
E-Torch Body  
P/N 31-808-4425



Torch Tube Set  
P/N 31-808-4390



E-Torch Retainer and Ferrule  
P/N 31-808-4498



# D-Torch: Maintenance

## Suggestions:

Always wear safety gloves

### Carbon Deposits Removal:

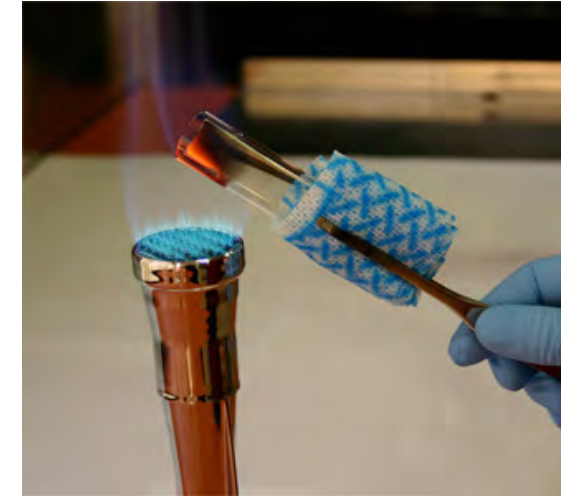
- Use a portable hand-held propane torch to burn off deposits
- Avoid heating the outer tube in a muffle furnace (due to the polymer ferrule)

### Salt Deposits Cleaning:

- Soak in a 25% Fluka RBS-25 solution or dilute acid
- Stand the tube upright in a beaker, covering the deposits with cleaning solution

### Metallic Films Removal:

- Soak in acid, preferably the same one used for sample preparation
- Ensure the acid covers the metallic deposits while the tube stands upright



We recommend that the polymer ferrule is not soaked in acid.



# The Role of the RF Coil

**RF Coil Condition:** Alignment, plating, and cleanliness improve energy transfer

## Key Factors for Energy Transfer:

### 1. Alignment

- Ensures a well-shaped and consistently positioned plasma

### 2. Correct Dimensions

- Essential for circuit tuning and stability
- Minor deviations can alter resistance and inductance

### 3. Base Metal & Plating

- **Copper:** Cost-effective but oxidizes quickly
- **Silver:** Best conductivity but tarnishes
- **Gold:** Best corrosion resistance, slightly less conductive

Corrosion Resistance



# Benefits of Maintaining your RF Coil:

## Key Challenge: Corrosion

- Caused by heat or chemical oxidation
- Reduces energy transfer efficiency, increasing stress on RF components

## Steps for Prolonging Coil Life:

- **Periodic Cleaning:** Removes tarnish and buildup
- **Avoid Acid-Based Polishes:** Use abrasive metal polish to clean without damage
- **Replace When Needed:** Replace coils with copper migration or significant tarnish

## Advantages of GE RF Coils:

- High-quality, consistent plating for longer life
- Supplied on a plastic former for correct dimensions and easier installation
- Proper alignment minimizes devitrification of the outer tube



# GE RF Coil:



## Why Choose a GE RF Coil?

- High Quality and consistent plating of our coils promotes an extended coil life
- Each coil is supplied on a plastic former ensuring correct dimensions and easy installation
- Each coil is supplied in a protective container to maintain dimensions and prevent corrosion during transportation

## RF Coil Installation Tool



***Ensure correct alignment of the RF coil***  
***Saves you time and the cost of a service***



## Why change your RF Coil?

### Introduction

Radio Frequency (RF) alternating current has been used for quite some time to induce a heat source in a localized region. Development started in the 1960's with the first commercial ICP available in 1974.<sup>1</sup> Originally the RF alternating current was generated by a valve or power amplifier tube, which was connected to the RF load coil via a matching circuit. This matching circuit was generally made up of a fixed capacitor and a tuning or variable capacitor. This tuning capacitor was adjusted to balance the system and lower the reflected power back to the RF generator. Today many if not all use a solid state RF generator and amplifier; some have matching circuits and others allow the frequency to change to match the plasma load (free-running generators). All but one of the ICP instruments use a coil to generate the plasma inside a torch. The coil is designed to match the rest of the RF system.

### RF Coil Plating

So why are some RF load coils plated? This goes back a long way to when the purity of copper was not as high as it is now. Silver plating of load coils was found to give higher conductivity of the RF energy. Once the purity of copper increased it was shown that the conductivity of the copper load coil was better than the silver-plated coil.<sup>2</sup>

So why are most RF load coils still plated? The answer is a little more complex.

The ICP's of today use two RF frequencies 40 and 27 Mhz to generate the plasma. For these two frequencies the majority of the current will flow in the outer 10-13 micron layer for copper and silver and 12-15 micron for gold.

The environment inside the torch box can be highly corrosive, and bare copper will corrode faster leading to a buildup on the outside of the coil which will lower the conductivity of the coil. It will also make the surface of the coil uneven, meaning the current has to travel a larger distance which increases the resistance of the coil. Plating the coil with a very high purity silver gives better corrosion resistance, as silver oxide does not affect the resistance. However, silver is attacked by sulphides,<sup>3</sup> which leads to a buildup on the silver surface. Alternatively, gold can be used to provide better corrosion resistance. However, there are a couple of issues with gold in an RF system. Firstly the conductivity of pure gold is only around 75% that of pure copper, and secondly the thickness of the layer of gold plating required to give a non-porous layer would mean that the

majority of the current will flow through the gold plated layer. This lowers the conductivity of the coil. For this reason, a thinner layer is typically used which is not thick enough to stop the porosity; hence the gold plated coils will eventually corrode. The addition of a PTFE coating over the silver coating will give very good corrosion resistance without the increase in resistance. However the constant heating and cooling in the torch box does eventually lead to the breaking down of the PTFE coating and exposes the silver plated coil to the atmosphere in the torch box. There are a couple of other important factors in the plating process that will have major effects on the conductivity of the coil. Firstly, the purity of the metal used for plating, and secondly how these layers are applied.<sup>4</sup> There are very few platers that use high purity gold and high purity silver. Most use a brightener in the solution so the end product has a shiny finish without the need to polish. A pure silver or gold plated finish will be dull in appearance (there are a number of coils now available from OEM's that have a dull silver finish). The coils Glass Expansion provides all use high purity gold and silver and are all physically polished after plating to give the smoothest finish to the outside of the coil reducing resistance.<sup>5</sup> A side benefit is the enhanced visual appeal of a bright and shiny finish. The more important aspect of plating is how it is applied and what is done to the coils during the process. The proprietary process used by Glass Expansion ensures the plating has the highest uniformity and purity.

Glass Expansion Application Notes 1

## RF Coil Application Note

# ICP-MS Cones

## Cone Environment

- High temperature (6,000 – 8,000 K)
- Thermal degradation
- Chemical degradation (exacerbated by TDS, acid content, organic solvents, etc.)

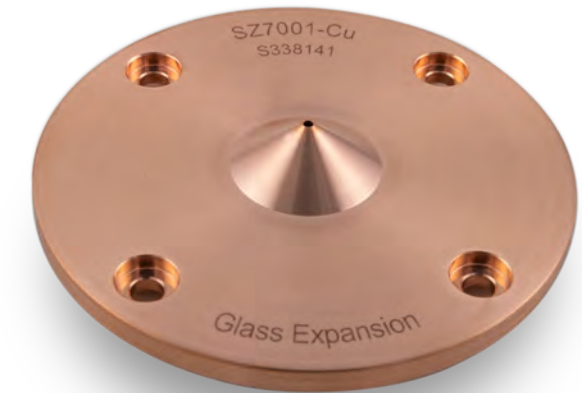
## Key Factors for High Quality Cones:

### 1. Purity of Raw Materials:

- Ensures performance and durability

### 2. Advanced Machining:

- CNC, laser, and electron beam welders for precise manufacturing



Copper Cones

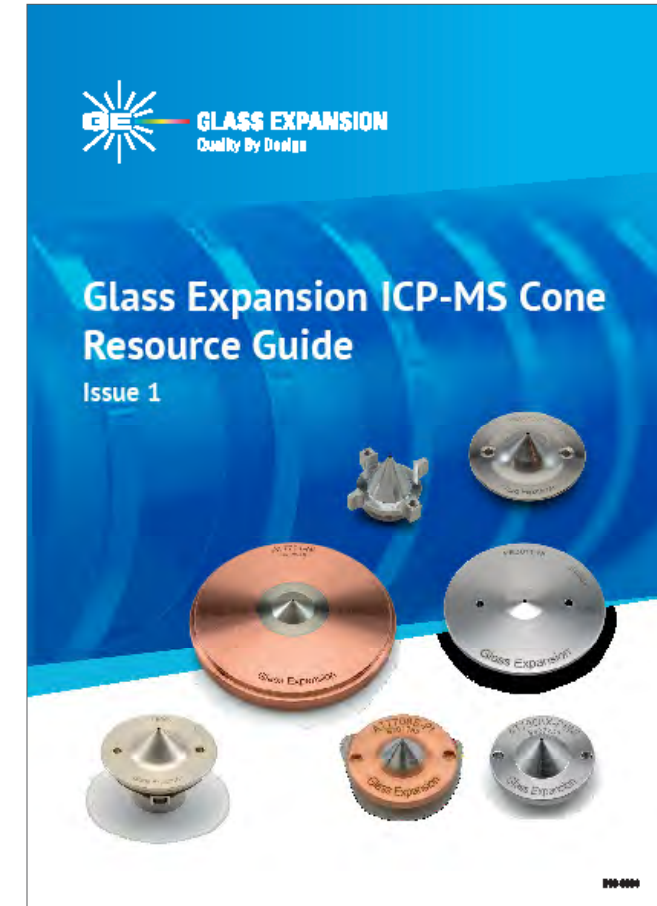
# ICP-MS Cones:

## Take Advantage of the Glass Expansion Warranty

- Meet or exceed OEM specifications
- Satisfaction guaranteed

## Refurbishment program for Pt Cones:

- If your platinum cone cannot be refurbished, we will provide a credit value of Pt in the cone which can be used on the purchase of any GE products, including new cones

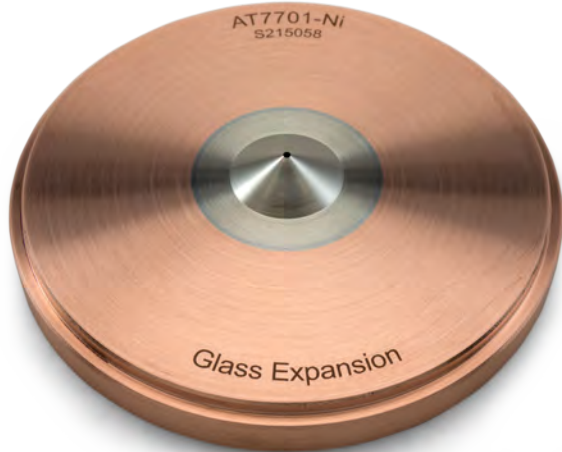


*ICP-MS Cone Resource  
Guide*



# Cone Availability

ICP-MS	Ni	Al	Pt	Pt - Boron Free	Cu
Agilent®	✓	✓	✓		✓
Nu Instruments	✓		✓		
PerkinElmer®	✓	✓	✓	✓	
Shimadzu®	✓		✓		✓
Standard BioTools™	✓				
Thermo®	✓	✓	✓	✓	



# Cone Material: Copper

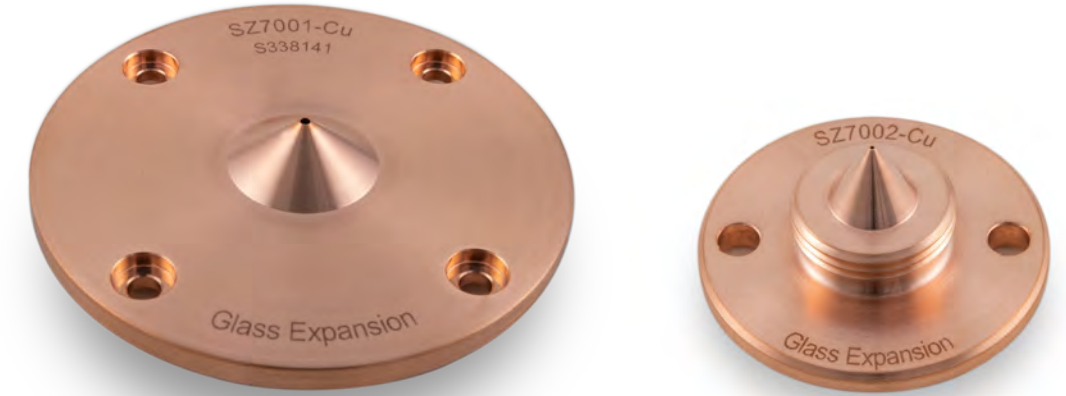
## Copper Cones: Pros & Cons

**Cost-Effective:** Solid copper is often the lowest-cost option

**Efficient Heat Transfer:** Runs “colder” but is more prone to matrix effects, corrosion, and sample deposition

**Shorter Lifespan:** Higher risk of orifice clogging, requiring frequent cleaning and replacement

**Application:** Suitable for low-level Al, Ni, or Pt measurements



# Cone Material: Nickel

## Nickel Cones: Reliable & Cost-Effective

**Standard Choice:** Balanced cost and performance

**Material Options:** Solid nickel or nickel-plated copper

**Durability:** More resistant to corrosion and deposition than copper

**Runs Hotter Than Copper:** Higher operating temperature keeps cones cleaner longer, reduces maintenance, and ensures stable signals with lower background

**Application:** Ideal for routine aqueous samples (<5% acid), excluding HF and organics



# Cone Material: Nickel Plated

## Ni Plated: Enhanced Chemical Resistance

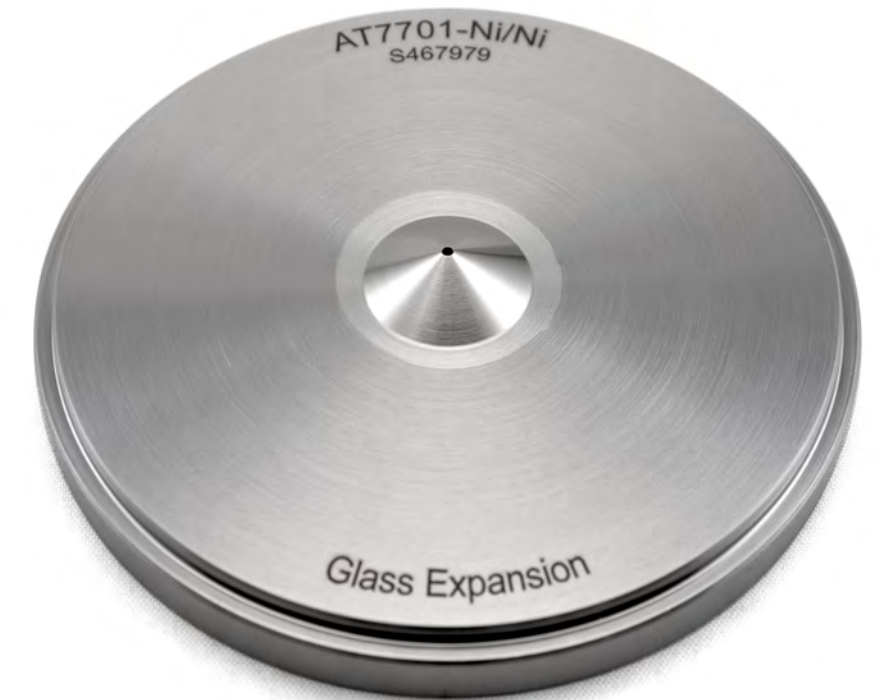
**Ideal for High-Acid Samples:** Recommended for acid concentrations >5%.

**Optimized Design:** Nickel plating protects copper while preserving its heat transfer efficiency

**Temperature Control:** Copper base helps maintain lower temperatures; optional skimmer base available for specific instruments

**Durability & Stability:** Prevents rapid degradation at the orifice, ensuring consistent sensitivity and signal stability

**Superior Quality:** Glass Expansion's electrodeless nickel-plating process ensures precision, reliability, and longevity





# Cone Material: Platinum

## Platinum Cones: Ultimate Durability & Performance

**Longest-Lasting Option:** Superior lifespan but highest cost structure

**Runs Hotter:** Less efficient heat transfer than copper and nickel, but stays cleaner longer

**Optimized Configurations:** Available with Cu, Ni-plated Cu, or solid Ni bases to balance heat transfer and chemical resistance

**Superior Chemical Resistance:** Best protection against matrix effects, corrosion, and sample deposition

**Ideal for Harsh Applications:** Suitable for high-TDS samples, aggressive acids (>5%), volatile organic solvents, and ultra-low detection limits

**\*Extended Lifespan:** Larger platinum tips (10mm, 15mm, 18mm) increase longevity—customers report up to 24 months with 18mm tips

**Refurbishment & Recycling:** Can be refurbished 2-3 times and later recycled for Pt reclaim value





# Cone Material: Aluminium

## Aluminium Cones: Cost-Effective Alternative

**Affordable:** Similar in cost to copper

**Susceptible to Corrosion:** Prone to matrix effects, corrosion, and sample deposition, like copper

**Ideal for Specific Applications:** Suitable for low-level detection of Cu, Ni, and Pt

**Preferred for LA-ICP-MS:** Commonly used in Laser Ablation ICP-MS



# When to Clean Cones

## Suggestions:

- Physical observation of cone condition using **Magnifier Inspection Tool** (P/N [70-803-1923](#)) or indicated by the data and results
- Sampler cone is more exposed to the plasma: more frequent cleaning
- *Always end the day by aspirating an acidified rinse solutions followed by UPW*

## Experimental indicators of cone cleaning:

- Increased background
- Memory effects
- Decreased sensitivity
- Change in vacuum

## Observational indicators for cone cleaning:

- Visible deposits near or in the orifice
- Distorted Orifice



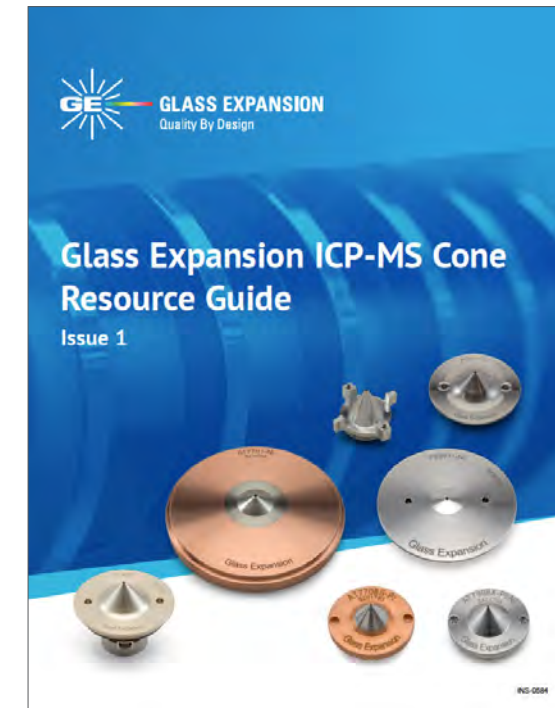
**Magnifier  
Inspection Tool**  
P/N [70-803-1923](#)

# How to Clean Cones

## Suggestions:

- **Use PPE:** Always wear safety glasses and gloves
- **Handle with Care:** Hold the cone by its edge; avoid applying pressure or using tools
- **Cleaning Expectations:** Removing sample deposits is key—discoloration is normal and can improve signal stability
- 3 recommended methods, from gentlest to most aggressive:
  - Method A (**Soak in Citranox**);
  - Method B (**Sonicate in Citranox**);
  - Method C (**Sonicate in Nitric Acid**)
- Order of severity (Don't use aggressive cleaners if it isn't needed):
  1. **Fluka RBS-25**
  2. Citranox
  3.  $\text{HNO}_3$
- Limit nitric acid exposure to prevent cone damage or orifice enlargement

## Tips on Care & Maintenance



# How to Clean Cones

## Protecting Threaded Cones During Cleaning

- **Avoid Corrosion:** Ensure threads stay free from corrosive solutions to maintain proper sealing and prevent bonding to the base
- **Extend Cone Life:** ConeGuard Thread Protector seals and protects threads during cleaning, preventing corrosion and wear, especially on platinum cones
- **Preserve Thread Condition:** Helps avoid cross-threading and damage to the instrument housing, ensuring longevity and reliable performance



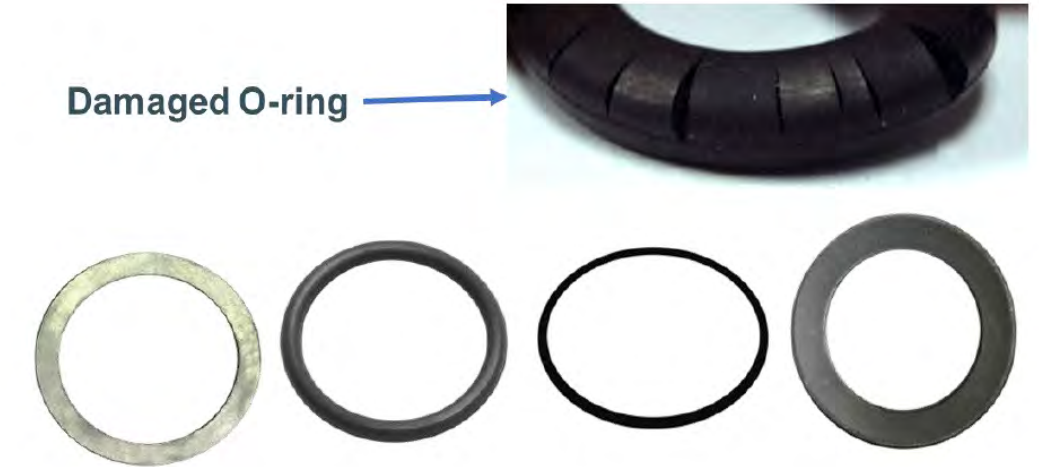
# Cones Re-Installation

## Suggestions:

- Always check gaskets or O-rings before installing cones

## Cone Conditioning:

- To ensure the lowest background levels of Cu and Ni, conditioning before use is recommended for **uniform coating that leads to improved long-term stability**
- To condition your cones, prepare the following conditioning solutions:
  - 1% nitric acid blank
  - 50 ppm calcium in 1% nitric acid
- Install the new cones or cleaned cones into the instrument. Turn on the plasma
  - **Aspirate the 50 ppm calcium solution for 10 minutes**
  - **Change to 1 % Nitric acid blank solution and aspirate for a further 10 minutes**





# Thank You



# Strategies for Long-Term Analytical Performance



## Presenter:

Dr. Maja Budanovic  
ICP Application Specialist,  
Glass Expansion GmbH  
Contact: mbudanovic@geicp.com

## Organized By:

Instrument Solutions Benelux B.V.  
Contact: info@instrument-solutions.com

**instrument**solutions  
*Technology for your success*

# Suggestions for Common Challenges (I)

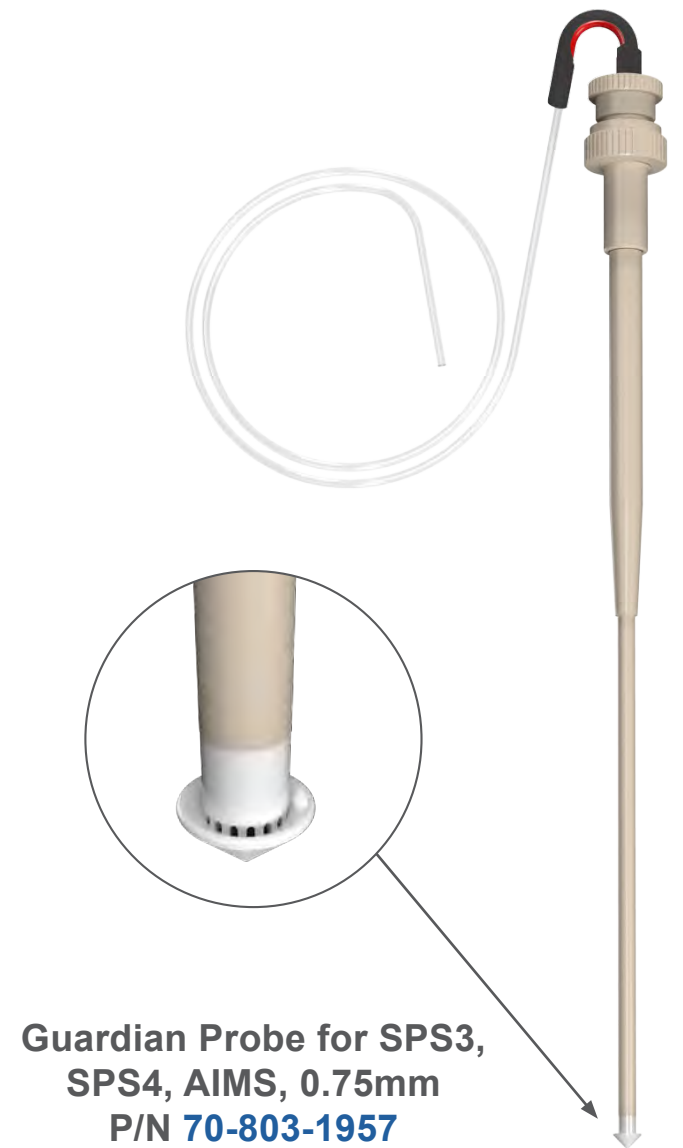
- **Good Digestions:** Clear liquids and consistent results (RSDs and spike recoveries)
- **Bad Digestions:** Precipitates (e.g., Ag, Fe, Si) and undigested particles

## Recommendations:

- **Guardian Sample Probe:** Enhances sample introduction and minimizes contamination
- **Guardian In-line Particle Filter:** Helps to remove particulates, reducing blockages in sample lines and nebulizers

## Contract lab in Australia-feedback:

- **Guardian Probe Performance:** Robust and reliable
- **Handling of Particulate Samples:** Remains unclogged
- **Reduced Nebulizer Failures:** Fewer issues compared to regular probes



# Suggestions for Common Challenges (II)

## Guardian In-Line Particle Filter P/N 70-803-1108 :

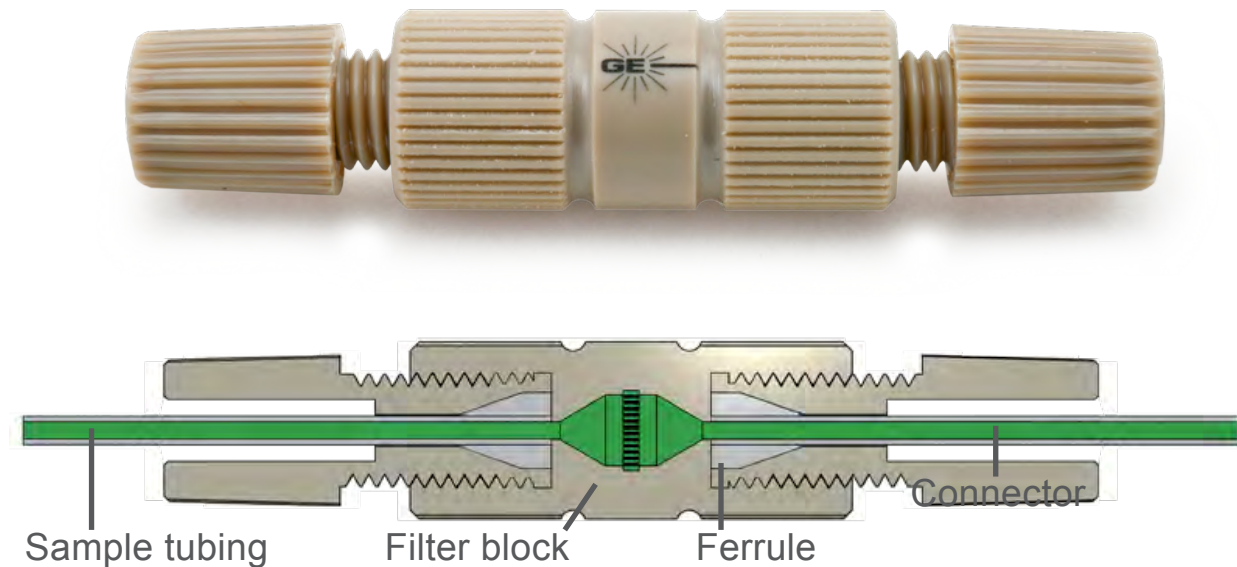
### Benefits

- Prevent large particles from clogging your nebulizer
- Insert between probe and nebulizer
- Re-usable PEEK filter (120 µm)
- Easily backflush to remove build up

**In-Line particle filter:** *“So far it has worked great, we have noticed significantly less clogged lines.”*  
**Fertilizer manufacturer - USA**

**In-Line particle filter:** *“By the way, the particle filters that we have purchased are working out very well with our soil sample analyses on our ICP-OES units, have saved a lot of headaches with blocked nebulizers!”*

**Soil & Plant Laboratory - Australia**



## Eluo Nebulizer Cleaning Tool P/N 70-ELUO

P/N 70-803-1160



# Challenges with Traditional Pump Tubing:

## 1. Premature Tab Failure:

- **Description:** Tabs on the tubing can become loose or break off prematurely, especially if they are not properly bonded or are of poor quality
- **Impact:** This can lead to detachment of the tubing from the connectors, causing interruptions in sample flow and requiring tubing replacement

## 2. Tubing Slippage/Displacement:

- **Description:** Tubing can slip from the connectors or the pump rollers, particularly if the tubing is not properly fitted or if the connectors are worn
- **Impact:** This can cause interruptions in the sample flow, inconsistent sample delivery and analysis interruptions



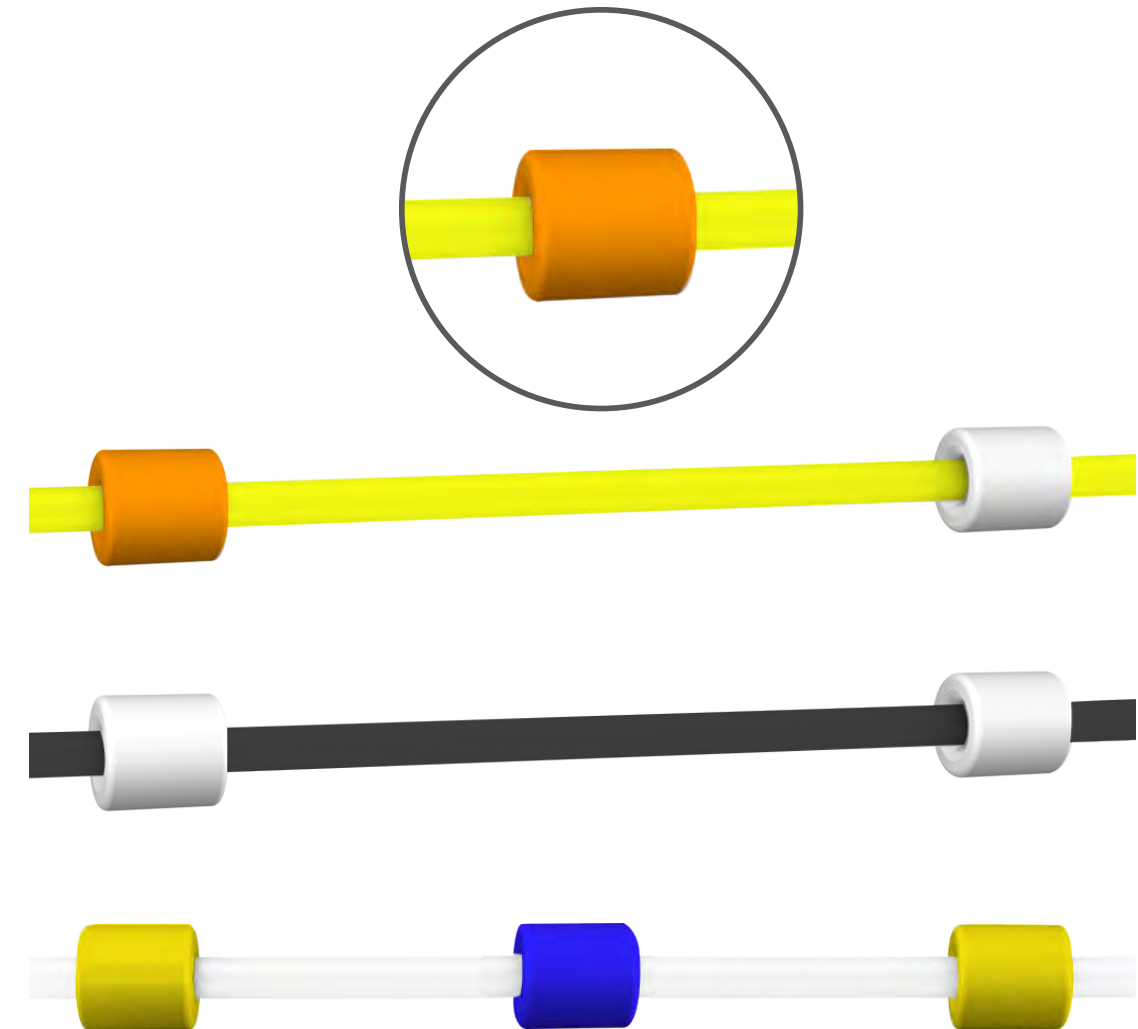
Traditional Pump Tubing



# ProLok™ Peristaltic Pump Tubing

## Features & Benefits:

- 1. Enhanced Bonding Strength:** The color tab now features twice the surface area, ensuring a stronger and more secure attachment to the pump tubing.
- 2. Durability:** Designed to prevent premature failure, the reinforced tabs eliminate issues with loose tubing connections.
- 3. Superior Material Quality:** Crafted from high-quality Tygon® material, this product delivers premium performance and exceptional consistency.
- 4. Consistent Compatibility:** Maintains the same GE part numbers for seamless integration.
- 5. Precisely controlled tab spacing** designed to meet and exceed industry standards for ICP-OES and ICP-MS peristaltic pumps.



ProLok™ Peristaltic Pump Tubing

# Sample Delivery System Maintenance

## Suggestions for Maintaining Pump Tubing:

- Pre-Stretch Tubing and Maintain the proper tension on tubing
- Frequent Replacements: Pump and capillary tubing can be a source of contamination
- **Lubricate pump rollers (EzyGlide Cloth):**
  - Reduce wear and increase lifespan by minimizing friction
  - Stabilize sample delivery by reducing pulsations



## Regular cleaning protocols:

- Implement a rinsing protocol between sample types using dedicated solutions to remove residual materials
- Start and finish each run by aspirating a mildly acidic blank solution or the sample matrix, followed by DIW for 5-10 min

# Helpful Tools for Dilution & Sample Uptake

## 1. Trident Dilution Factor Calculator:

- Determine how much your sample and internal standard are diluted
- [Click here to use the Trident Dilution Factor Calculator](#)

Sample pump tubing orange/green, 0.38mm ID ▼  
Internal standard pump tubing orange/black, 0.13mm ID ▼

Sample is diluted by 10.5%  
ie Final conc. of sample is 0.895 times initial concentration

Internal standard is diluted by 89.5%  
ie Final conc. of internal standard is 0.105 times initial concentration  
or Internal standard is diluted by a factor of 9.5

This calculation should be used as a guide only. Variations between pump tubes and roller pressures mean that the accuracy of the calculation cannot be guaranteed.

## 2. Pump Speed & Sample Uptake Calculator:

- Select the right pump tubing for the required sample uptake
- Choose the correct pump speed for optimal sample flow
- Calculate sample uptake based on your current pump tubing and speed
- [Click here to use the Pump Speed & Sample Uptake Calculator](#)

**Step 1. Select pump configuration**

Choose ICP model ▼

Pump diameter (to outside of rollers) mm

Number of rollers

Roller diameter mm

**Step 2. Select pump tubing**

Select pump tubing ▼

**Step 3. Calculate pump speed or sample uptake**

Sample uptake (µl/min) Pump speed RPM

Enter your required sample uptake to calculate the pump speed OR your actual pump speed to calculate the sample uptake.

update calculation

This calculation should be used as a guide only. Variations between pump tubes and roller pressures mean that the accuracy of the calculation cannot be guaranteed.

# Application dedicated SIS Solutions

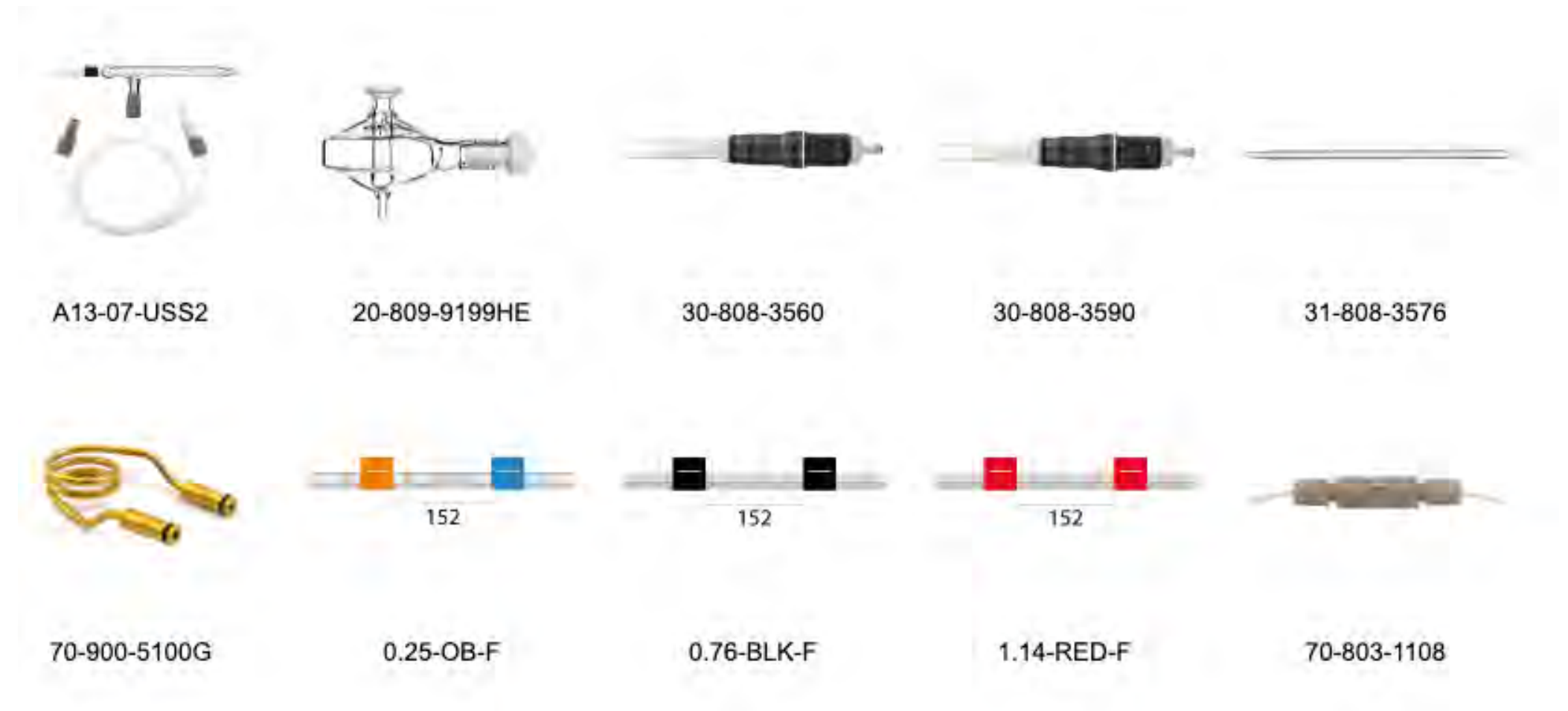
Agilent®: 5100, 5110, 5800, 5900

[View All Products for this Model](#)

## Instrument Applications

- [Animal feed](#)
- [Brines and salts](#)
- [Chemicals and fertilizers](#)
- [Clinical and forensic materials](#)
- [Drinking, ground and surface water](#)
- [Food and drink](#)
- [Geological with HF](#)
- [Geological without HF](#)
- [Isotopic Analysis of Minerals](#)
- [Metals](#)
- [Petrochemicals](#)
- [Plants](#)
- [Soil and sediment with HF](#)
- [Soil and sediment without HF](#)
- [Waste water and sludge](#)
- [Wear Metals in oil](#)

## Application Example: Chemicals and fertilizers





# Recommended Products for Environmental Samples

## Challenges:

- Rapid devitrification of torch
- Matrix build-up on cones
- *Signal drift*
- *More frequent maintenance intervals*
- *Higher consumable costs*
- *Longer washout times*

## Solutions:

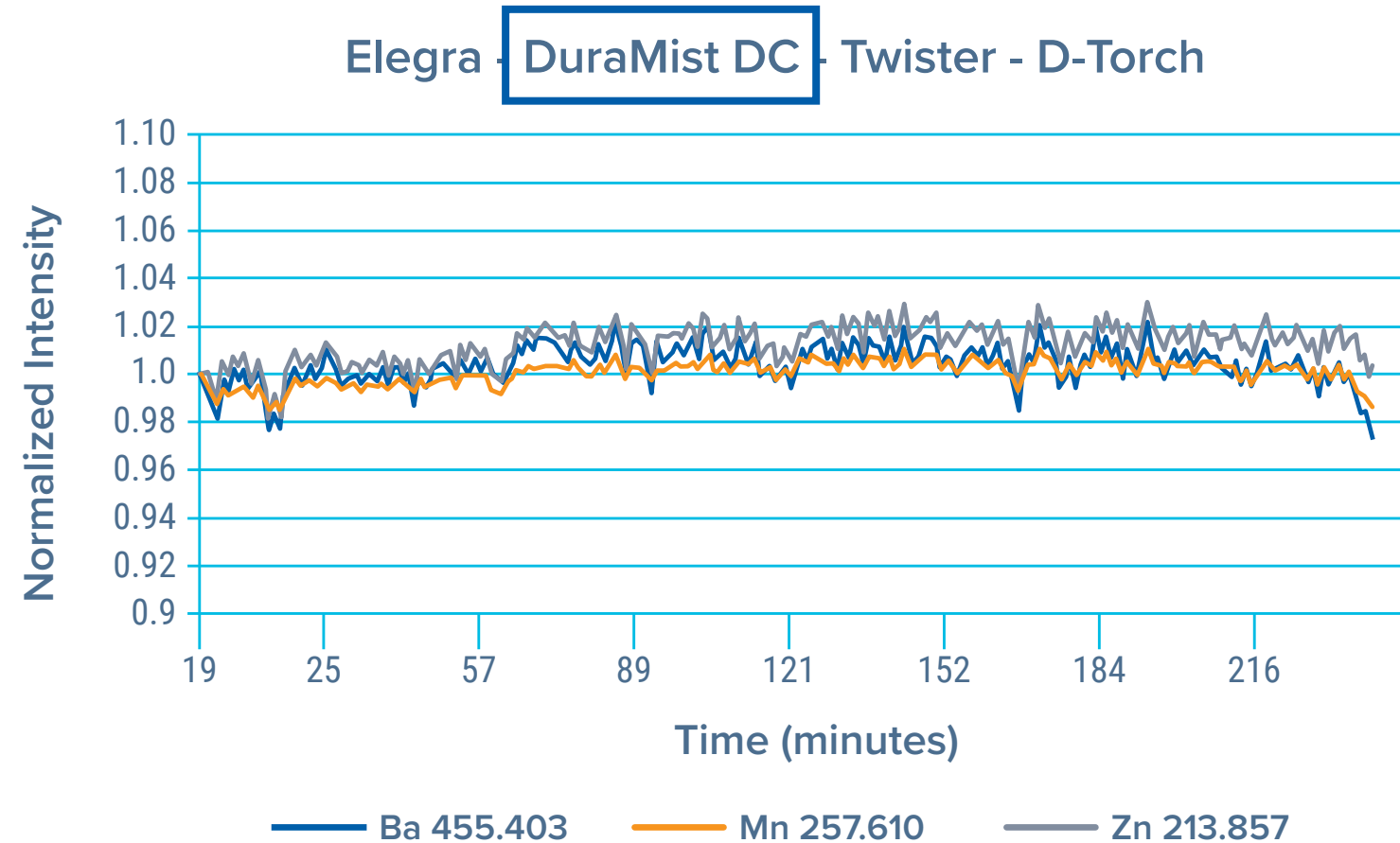
- Argon Humidifier
- High TDS nebulizer
- Baffled cyclonic spray chamber
- **Demountable torch & large ID Injector**
- *Ni-plated or Pt-tipped cones*
- *Increase auxiliary gas flow*
- *Increase rinse times*
- *Regular maintenance schedule*



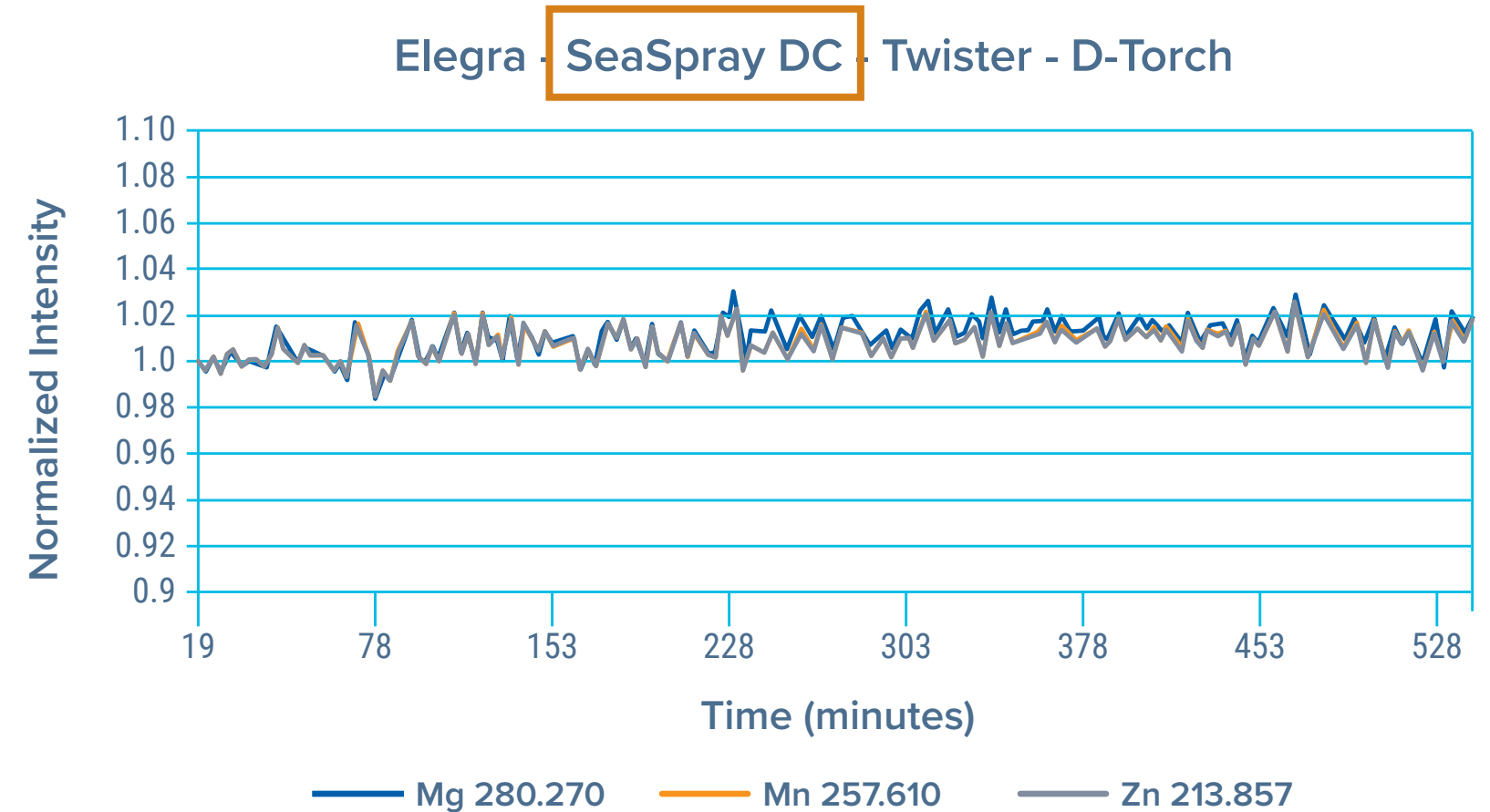


# Performance Evaluation in 3.5% and 10% NaCl

- **Signal drift is a common challenge in testing labs**, often caused by a clogged nebulizer or injector
- Selecting a high TDS nebulizer, baffled cyclonic spray chamber and Ar humidifier can effectively eliminate signal drift

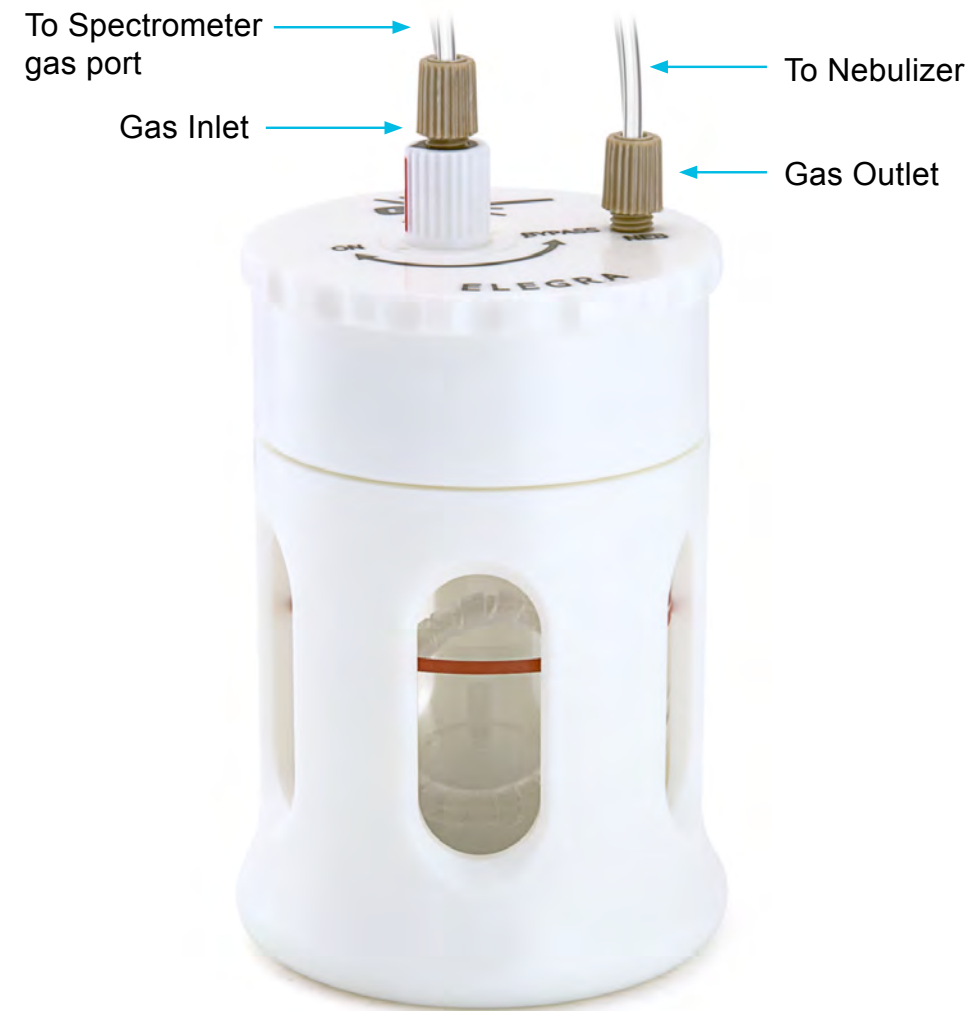


**Case Study 1:** Long term stability test, 4h analysis of 1 ppm standard in 10 % NaCl (Agilent 5100 SVDV ICP-OES)



**Case Study 2:** Long term stability test, 9h analysis of 1 ppm standard in 3.5% NaCl (Agilent 5100 SVDV ICP-OES)

# Elegra Argon Humidifier



## Features:

- No heating or electric power required
- Membrane humidification technology
- Improved signal stability for samples with high TDS
- Inert metal free construction
- **Dual-Channel version** allows simultaneous humidification of nebulizer & aux. gas

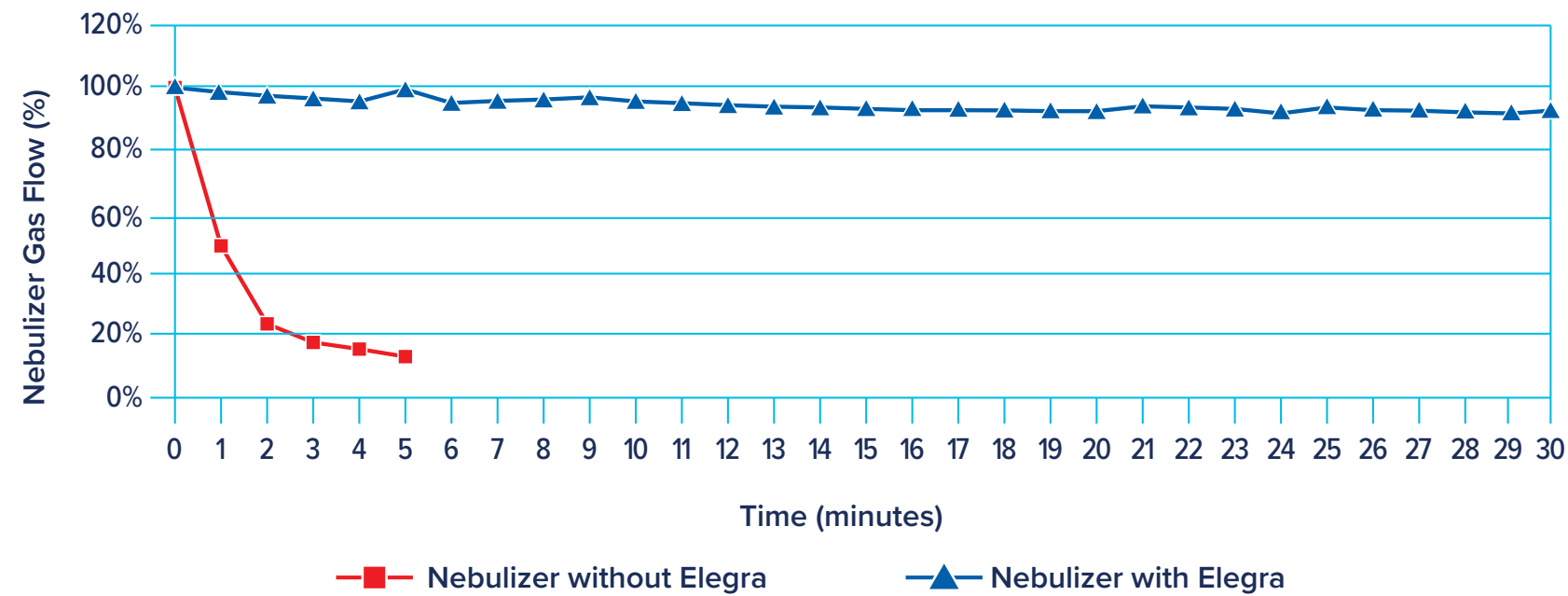
## Other tips for high TDS:

- Increasing the auxiliary argon flow will lift the plasma higher off the injector, slowing salt buildup at the injector tip
- Extended rinses in between each sample are also recommended



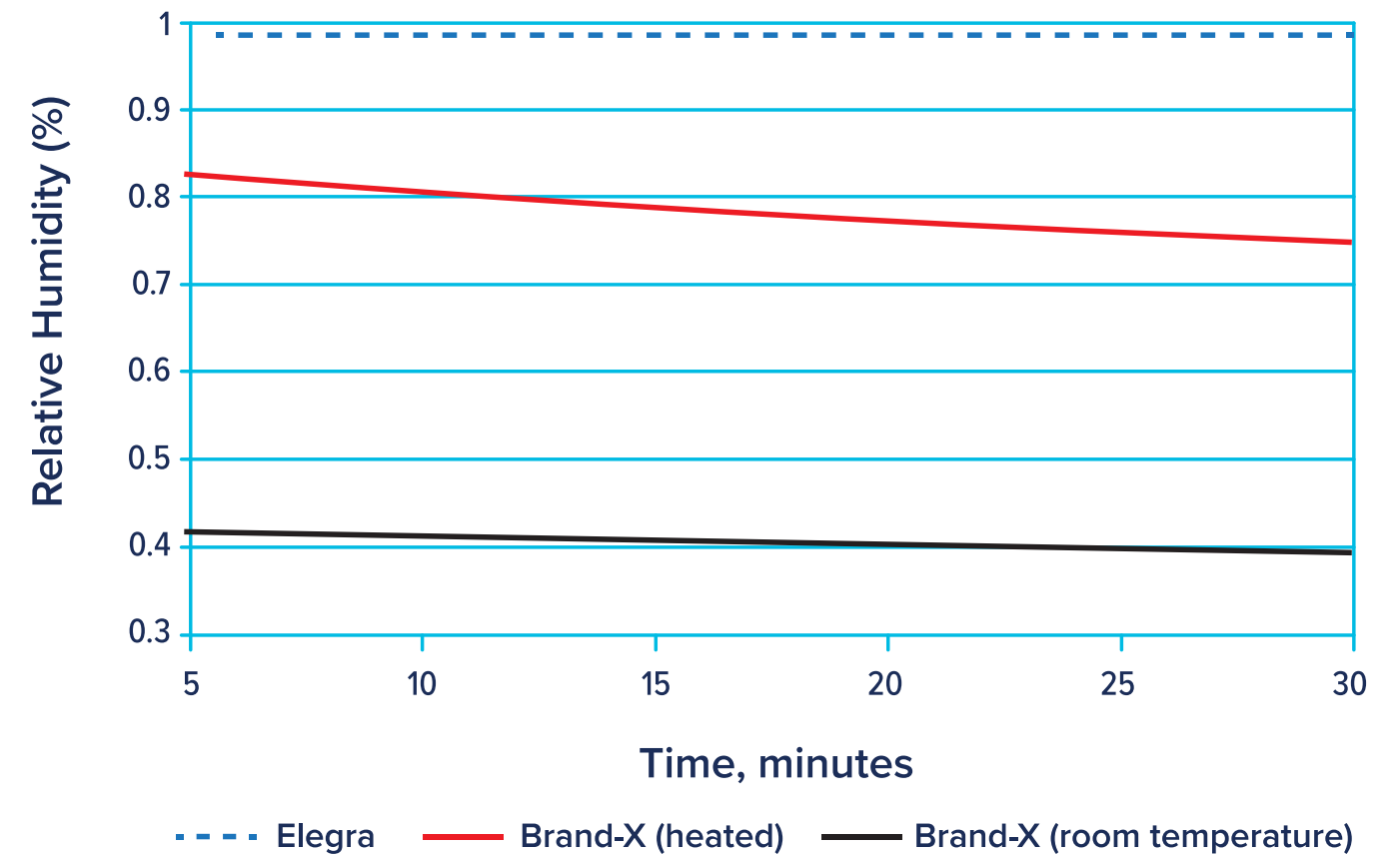
# Elegra Argon Humidifier: Performance

## Concentric Nebulizer with 25% TDS Tolerance

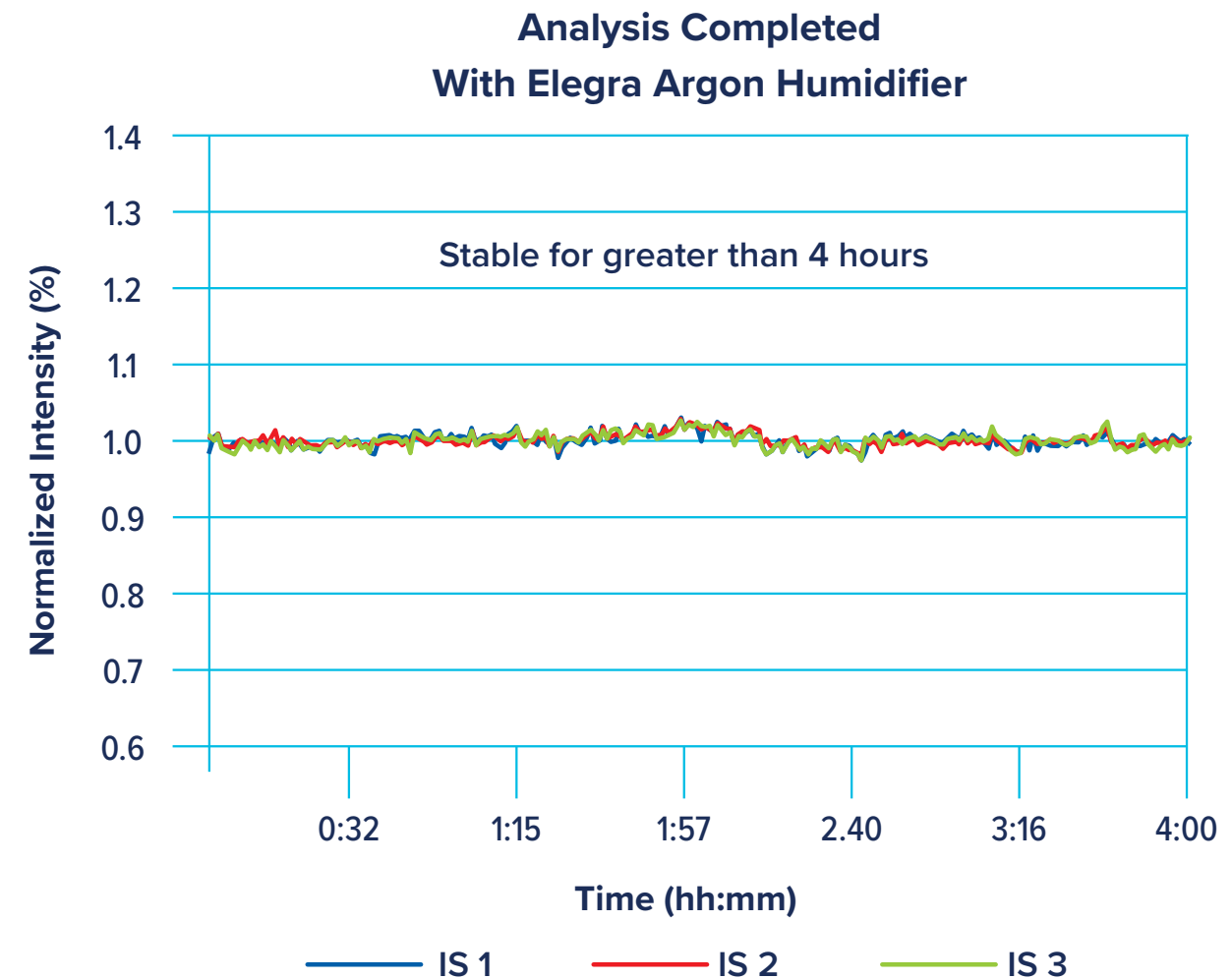
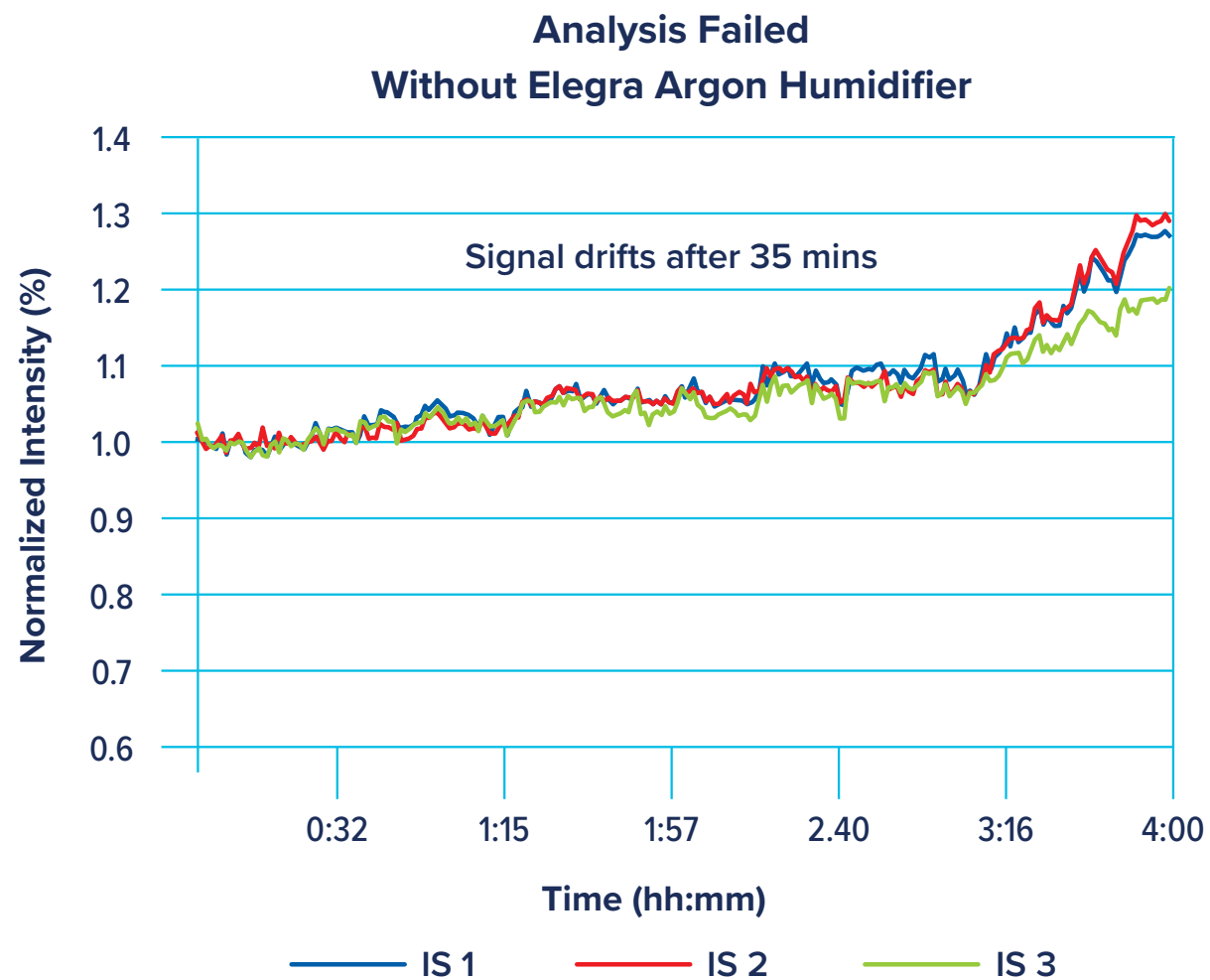


- Conikal nebulizer typically with up to 5% TDS tolerance
- **Added moisture from Elegra prevented nebulizer clogging**

## Percent Humidity Relative to Elegra (Elegra=1)



# Elegra Argon Humidifier: Performance (II)



- High-throughput contract lab evaluation for Li metaborate
- **Without Elegra:** IS resulting in failed analysis (>10% drift)
- **With Elegra:** no variation in IS signal over four-hour period

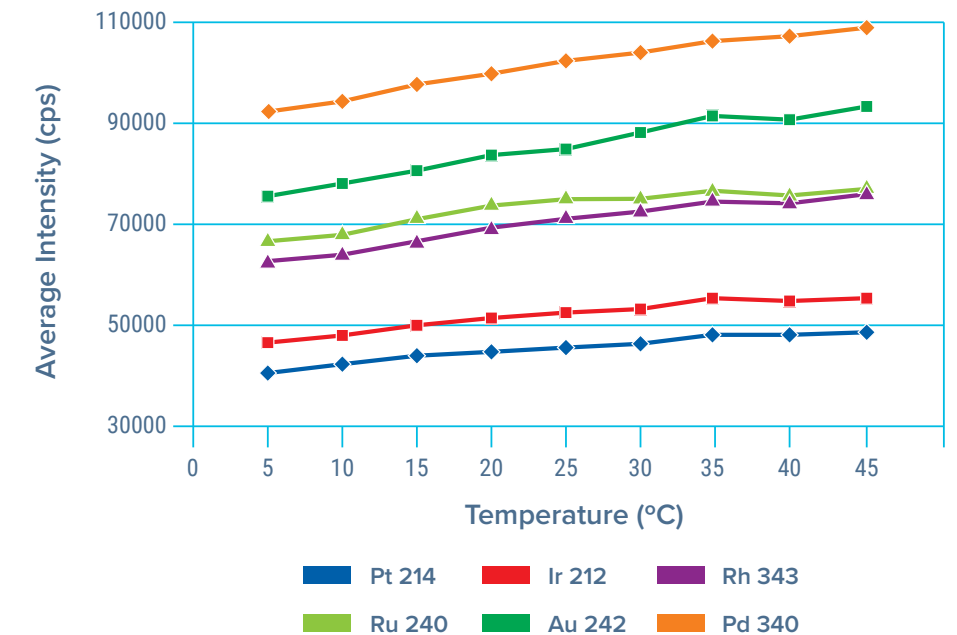
# IsoMist XR Spray Chamber: Benefits

## Limitations of Room Temperature Spray Chambers

- Sensitivity drift with temperature
- Excessive plasma loading (volatile solvents)
- Excessive oxide formation (ICP-MS)

## Unique to the IsoMist XR Spray Chambers

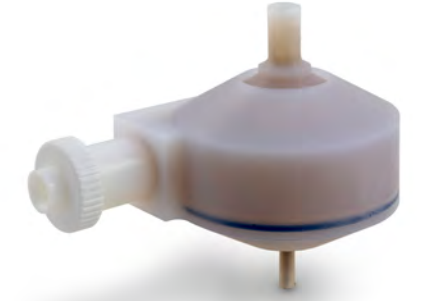
- The only temperature-controlled spray chamber that can offer **cooling down to -25°C** or **heating up to +80°C** in one single platform
- Programmable in 1.0°C increments
- Maintaining a stability of +/- 0.1°C



Glass



Quartz



PFA



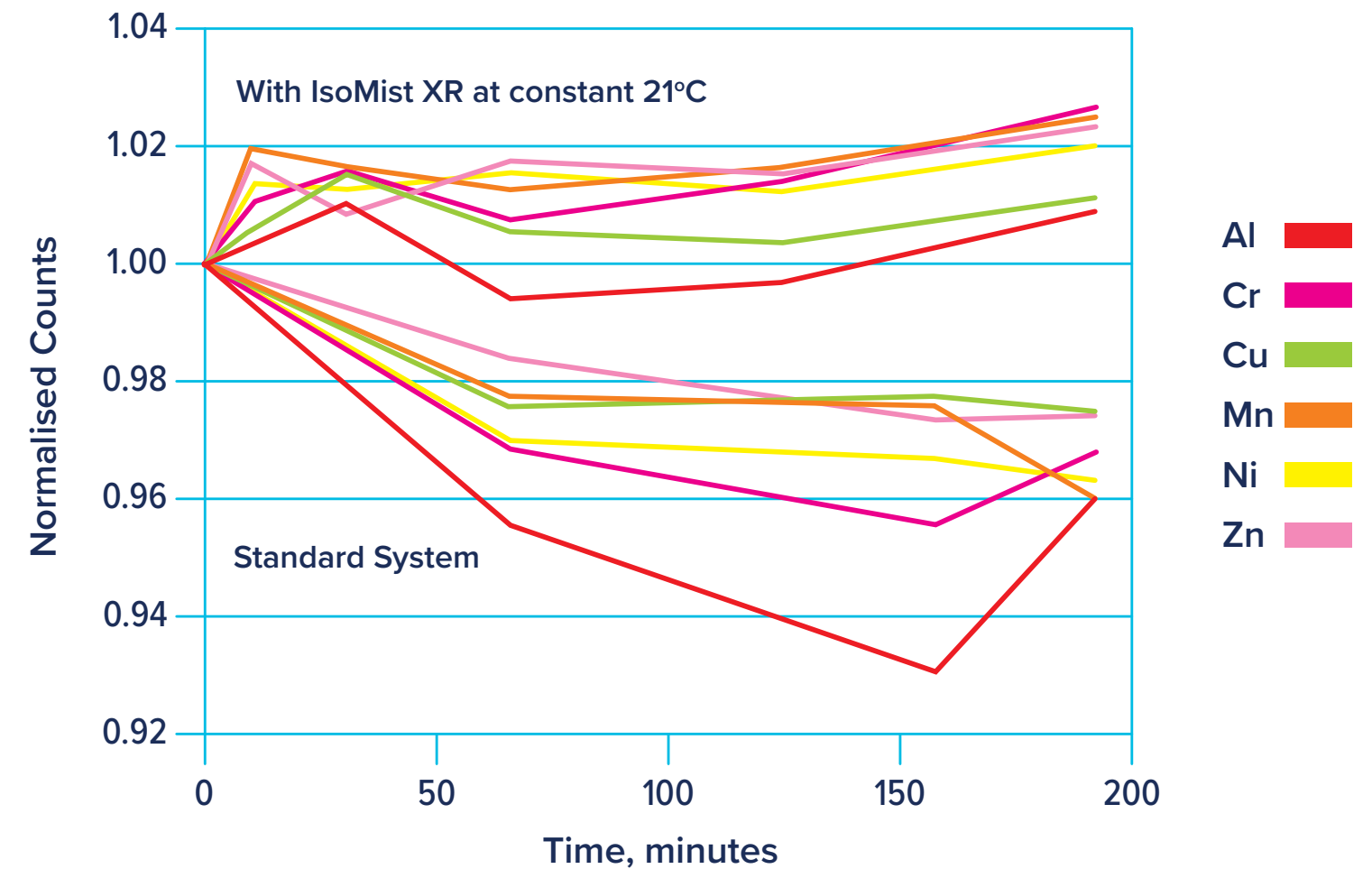
# IsoMist XR™ Spray Chamber

## Benefits

- Programmable from -25°C to 80°C in 1°C increments
- Reduces isobaric oxide interferences
- Increases the chance of passing QC checks
- Eliminates drift (2°C change equals 10% shift in sensitivity)



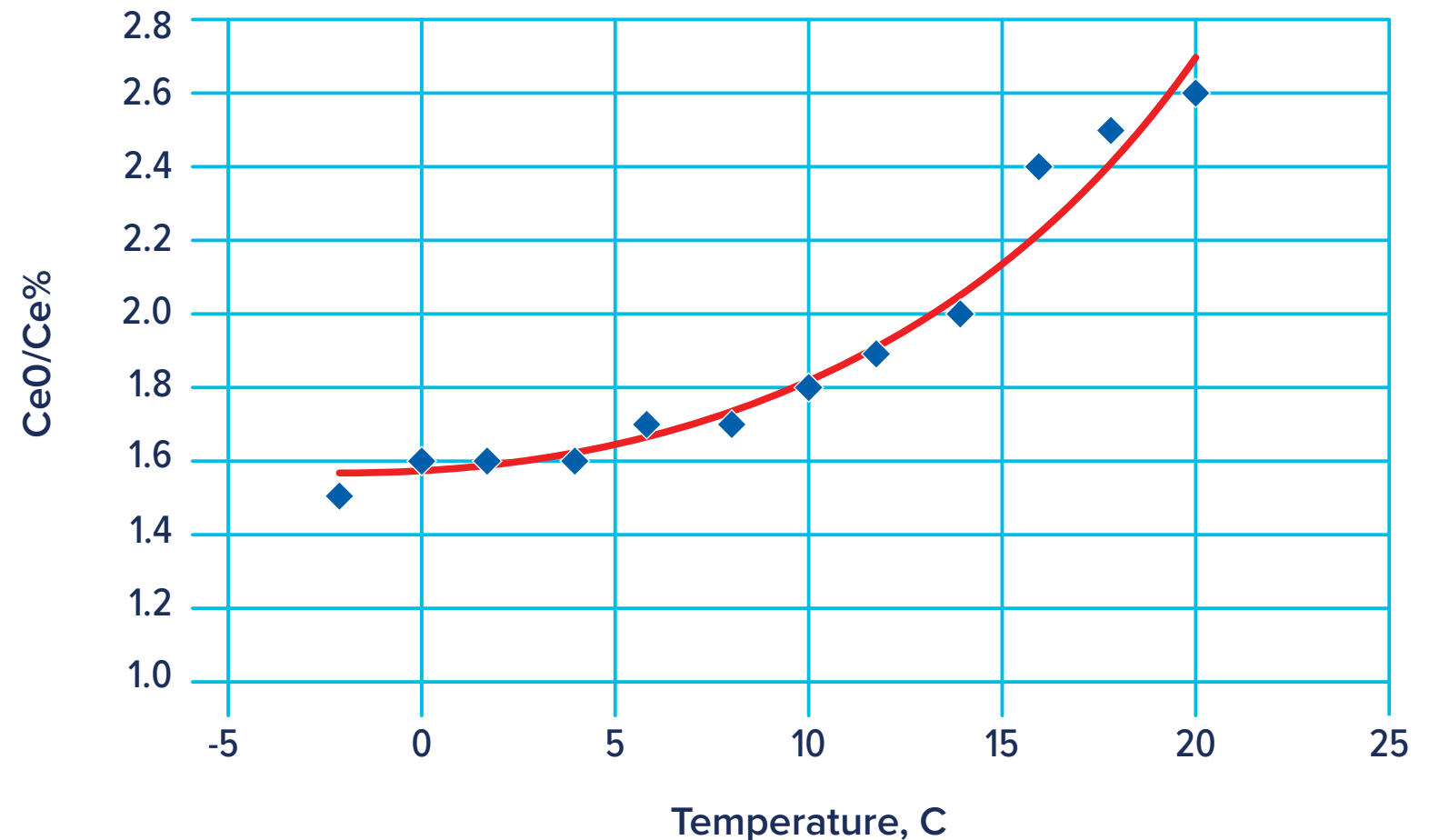
## Effect of constant temperature on signal stability



# The IsoMist XR™ Spray Chamber: Applications

- **Oil refineries:**  
Light naphthas
- **Solvent manufacturers:**  
Ketones & alcohols
- **Environmental labs:**  
Eliminate re-calibrations
- **Wear metals in used engine oils:**  
Reduce viscosity
- **Precious metal refiners:**  
Greater accuracy
- **ICP-MS users:**  
Oxide reduction
- **Limited volume samples (clinical):**  
Increases Sensitivity
- **Any “hot” determinations:**  
Reduced waste

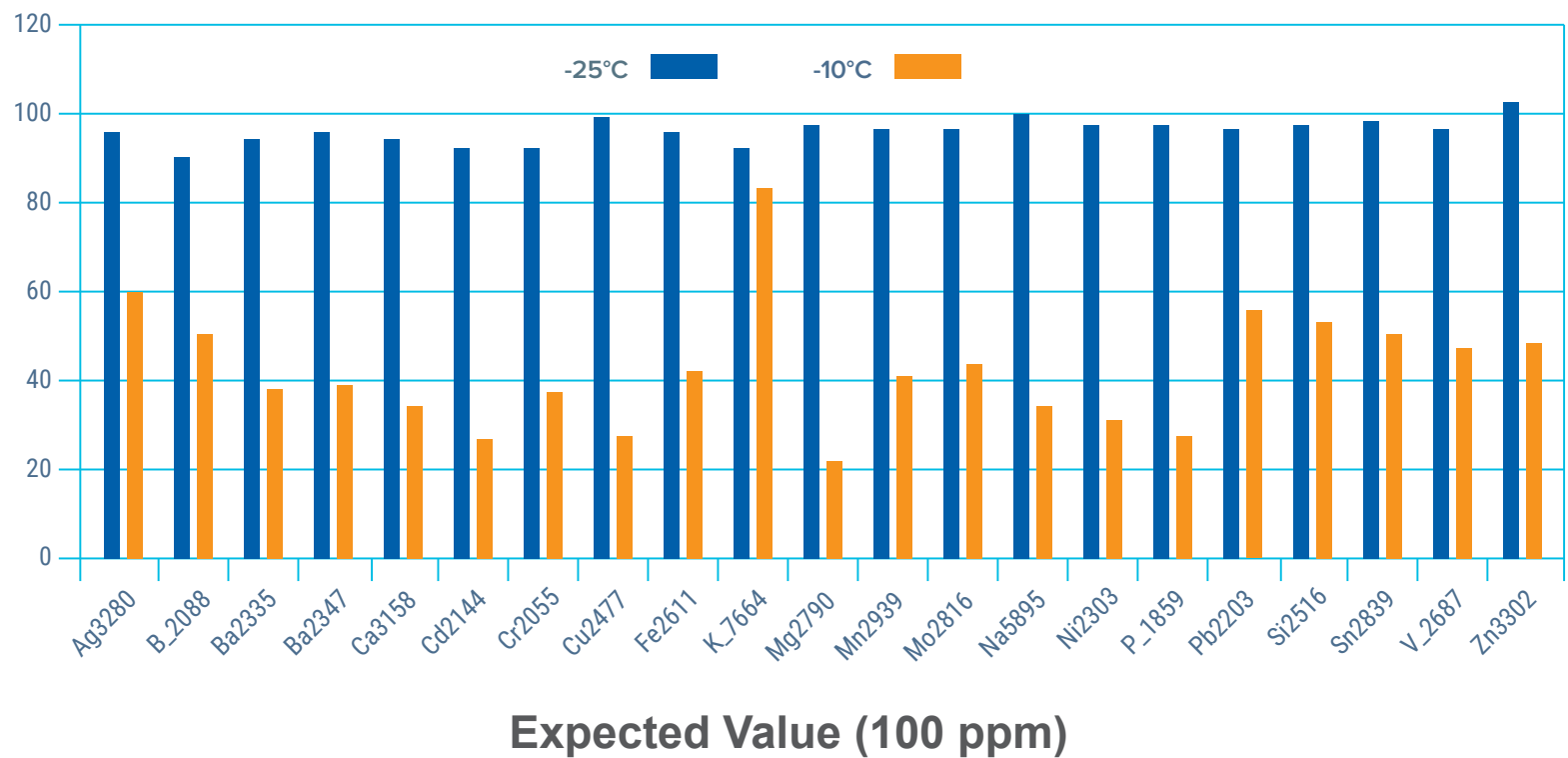
**Effect of IsoMist temperature on ICP-MS  
Oxide Ratio**



# The IsoMist XR™ Spray Chamber: Effect on Accuracy & Precision

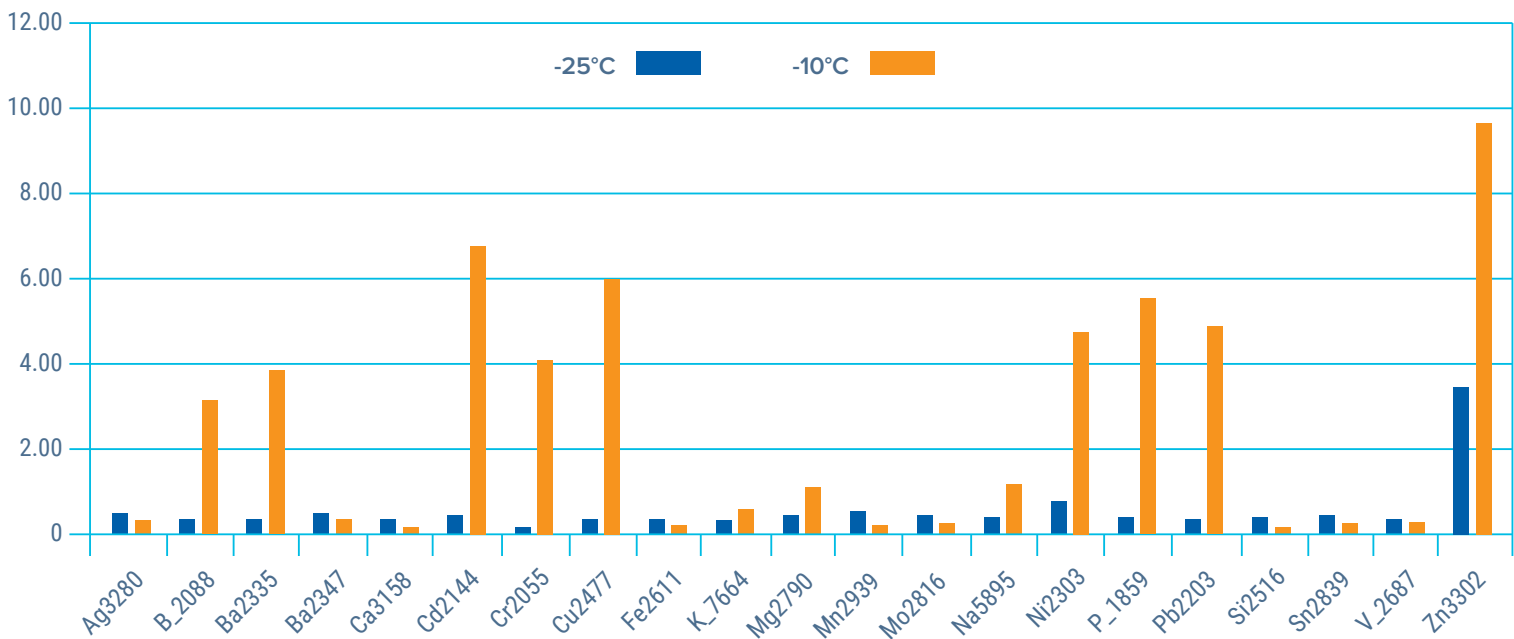
## Accuracy

Effect of Spray Chamber Temperature on Accuracy (100 ppm standard)



## Precision

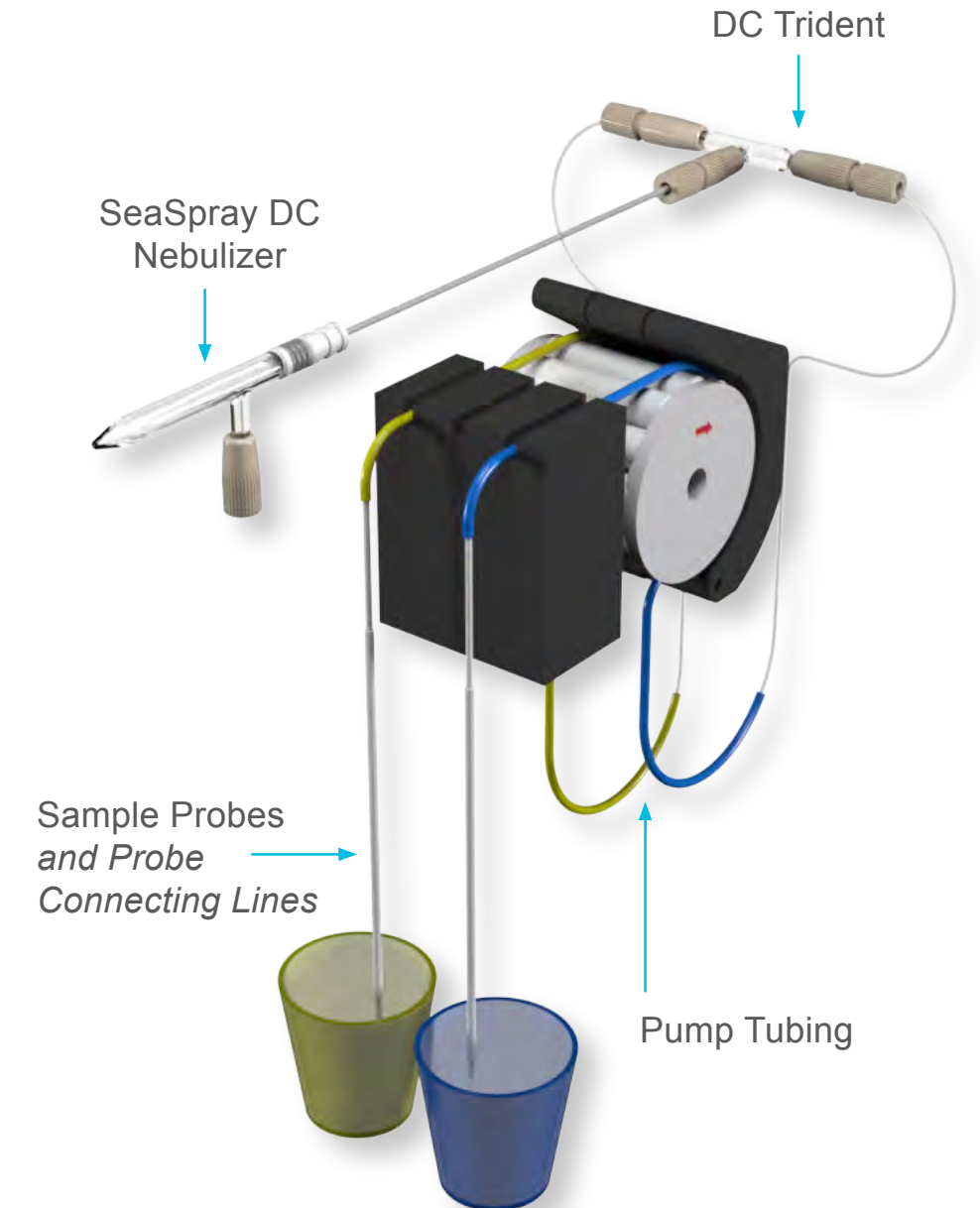
Effect of Spray Chamber Temperature on Precision



# Internal Standard Addition Kit

**Internal standardization (ISTD)** in ICP improves analytical accuracy by compensating for:

- **Variations in Sample Uptake Rates:** Adjusts for differences in viscosity and total dissolved solids
- **Mass-Space Charge Interferences in ICP-MS:** Reduces signal suppression or enhancement effects
- **Instrument Drift:** Stabilizes long-term signal fluctuations for consistent results
- **Plasma Fluctuations:** Compensates for changes in plasma conditions that may affect sensitivity
- **Improved Precision:** Enhances reproducibility by normalizing response variations



# Trident CT™ ISTD Kit

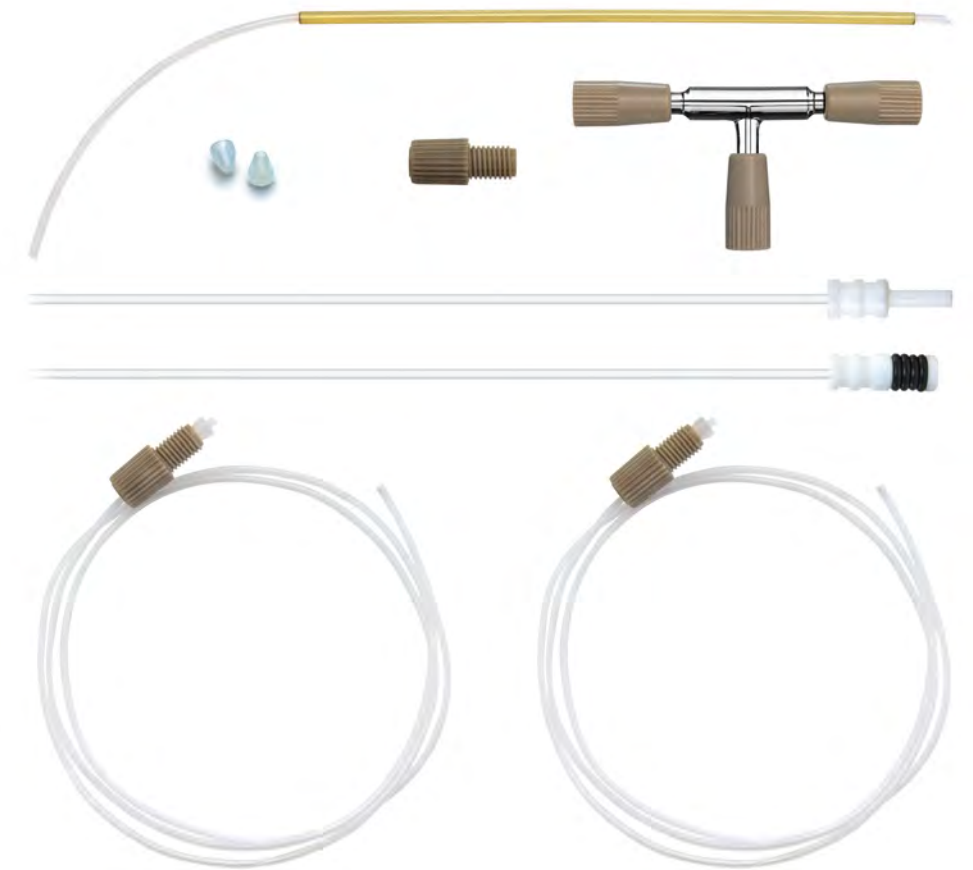
## 1. Enhancing ISTD Recovery, Preventing Leaks & Cross-Contamination:

- Compact, efficient mixing chamber ensures complete mixing of the sample and reagent
- **ConstantTorque (CT) ratchet fittings** for a durable, leak-free seal on all connections
- Consistency in torque application helps maintain the reliability and performance of the mixing chamber

*"I used an older version of the PE Online IS Addition kit for many years. ... I have found a similar kit offered by GE to be a great improvement over the old PE kit. It has a glass T with friction-fit connections that are the same as the GE quick connect nebulizer fittings...."*  
**Government laboratory - USA**

## 2. Zero dead volume connections:

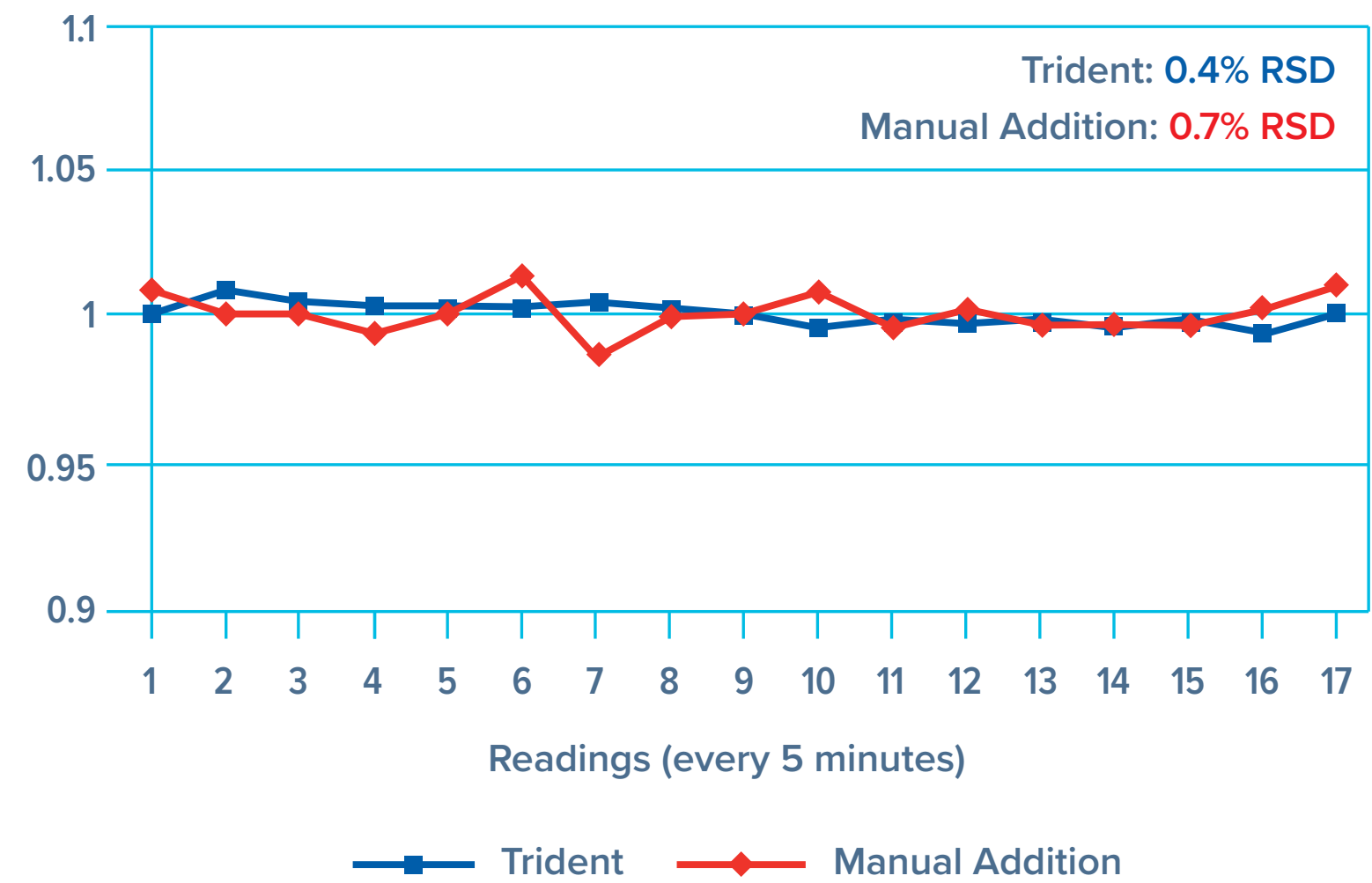
- Between nebulizer and spray chamber: Helix CT
- Between sample line and nebulizer: UniFit connector





# Trident CT™ ISTD Kit

Comparison of long-term stability of in-line addition versus manual addition of internal standard



# Nebulizers: Troubleshooting



## Verify the nebulizer back-pressure after instrument warm-up:

1. **Low nebulizer back-pressure** and a loss in sensitivity can indicate a leak on the supply line:

- Check Ar nebulizer gas connection at the instrument and at the nebulizer gas arm
- Nebulizer gas supply tubing can harden over time, losing their flexible, gas-tight seal
- Argon loss: Even a 1% loss can lead to significant changes in ICP analytical results



2. **High nebulizer back-pressure** can indicate a partially blocked or clogged nebulizer:

- Clean nebulizer or replace if necessary

## Record your normal sample uptake rate

- A change in uptake rate can indicate a blockage, worn pump tubing or incorrect tension on the pump

# Nebulizers: Cleaning Procedures

**Good Practice:** To maintain your nebulizer, start and finish each run by nebulizing a mildly acidic blank solution, followed by DIW for 5-10 min

## Practices to avoid:

- Avoid inserting wires into the nebulizer orifice
- Never touch the nebulizer tip
- Avoid cleaning glass or quartz nebulizers with HF
- Do not use ultrasonic baths for glass nebulizers



# Nebulizers: Cleaning Procedures

## For Blockages:

1. Initially flush with water using the Eluo
2. Soak nebulizer tip in 25% Fluka for 24 hours. *An initial flush of 25% Fluka may be required*
3. Flush 3x with water using the Eluo
4. *Stubborn deposits may require an additional soaking for 2 hours with 5% HNO<sub>3</sub>*
5. Flush 3x with water using the Eluo
6. *For faster drying, flush with methanol*

## ICP Nebulizer Maintenance Made Easy Video



# Spray Chambers: Maintenance

## Suggestions for Glass Spray Chambers:

- **Do not:** use HF, sonicate, nor use metal or ceramic brushes
- **Daily cleaning:** Start and end analysis by nebulizing mildly acidic blank followed by DI water
- **Initial cleaning:** Nebulize 2.5% Fluka RBS-25 for 15 mins followed by DI water
- **Thorough cleaning:** Overnight soak in 25% Fluka followed by DI water rinse
- Check Helix CT seal and UniFit drain line, replace as needed

**Important note:** Our glassware nebulizers, spray chambers, and torches are supplied clean and ready to use



Replace Helix CT seal,  
e.g. P/N [70-803-1456](#)



Replace UniFit drain line,  
e.g. P/N [UFT-16-75](#)



# Inert Spray Chambers: Maintenance

## Care and Maintenance of PEEK Chambers:

Start & Finish with mildy acidic blank solution

**Avoid Metal Tools:** Do not use metal or ceramic brushes for cleaning

**Fluka 'RBS-25' Cleaning:** If performance drops, clean with 2.5% Fluka solution for 15 minutes or soak in 25% Fluka solution overnight

## PTFE & PFA Spray Chambers:

**Surface Treatment:** The brown color indicates a treated surface for consistent drainage and wetting (not a coating). The treatment may degrade with prolonged use depending on the samples

### Cleaning Guidelines:

- **No H<sub>2</sub>O<sub>2</sub>:** Avoid H<sub>2</sub>O<sub>2</sub> as it accelerates degradation
- **Avoid Contact:** Don't touch the internal surface with hands or tools
- **Color Fading:** Normal fading doesn't affect performance

## Fluka 'RBS-25' Cleaning

**\*Re-treatment:** If soaking doesn't restore performance, return to Glass Expansion for re-treatment



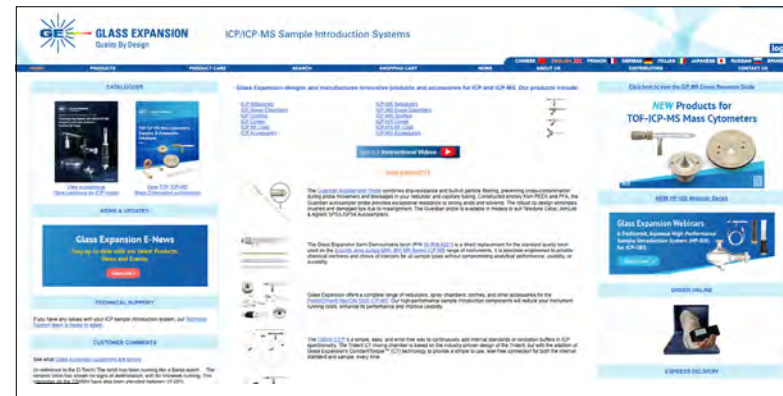
Soak in 25% Fluka RB-25



Replace O-Ring Seal P/N **V-044**

# Helpful ICP Resources

- Application notes
- Newsletters
- Catalogs
- Product flyers
- Website
- Product care advice
- Operating instructions
- Videos
- Webinars



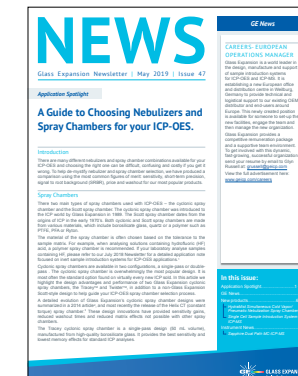
Website



Catalogs



Flyers



Newsletters



Instructions



Application Notes

# Thank You