

## Glass DC Nebulizers

### SeaSpray

1mL/min uptake	A22-1-USS1
400µL/min uptake	A22-1-USS04

### MicroMist

400µL/min uptake	A22-1-UM04
200µL/min uptake	A22-1-UM02
100µL/min uptake	A22-1-UM01
50µL/min uptake	A22-1-UM005



## DC Nebulizers for HF

### OpalMist

400µL/min uptake	A22-1-PFA04
200µL/min uptake	A22-1-PFA02
100µL/min uptake	A22-1-PFA01
50µL/min uptake	A22-1-PFA005



## IsoMist XR

### Programmable Temperature Cyclonic Spray Chamber

Glass Spray chamber	KT-1096-XR
Quartz spray chamber	KT-1096Q-XR
PFA spray chamber	KT-1096P-XR
Twinnabar spray chamber	KT-1096T-XR



## Spray Chambers

### Twister

50mL Cyclonic (Aux. Port)	20-809-3594HE
---------------------------	---------------

### Twister

50mL Cyclonic (2.4mm Aux. Port)	
Inline Screw Mount	20-809-3841HE

### Twister

50mL Cyclonic (2.4mm Aux. Port)	
90deg Screw Mount	20-809-3854HE

### Twister

50mL Cyclonic with Screw Mount	20-809-3892HE
--------------------------------	---------------

## Spray Chambers

### Twinnabar

20mL Cyclonic	20-809-3650HE
---------------	---------------



### Cinnabar

20mL Cyclonic	20-809-3709HE
---------------	---------------



## Spray Chambers for HF

### Tracey PFA44

44mL Cyclonic	20-809-3713
---------------	-------------



## Torches

### D-Torch

30-807-0540
-------------

#### Comprises:

Base and Inner Tube	31-808-2847
Quartz Outer Tube	31-808-2848
Retaining Ring	31-808-2818



### D-Torch for HF

30-808-2937
-------------

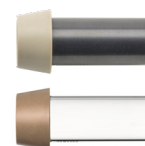
#### Comprises:

Base and Inner Tube	31-808-2847
Ceramic Outer Tube	31-808-2849
Retaining Ring	31-808-2818



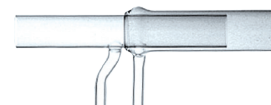
#### D-Torch Options:

Quartz Outer Tube	31-808-2848
Ceramic Outer Tube	31-808-2849



### Quartz Torch

Standard Quartz Torch	30-808-8107
High Efficiency Quartz Torch	31-808-2784



## Torches

### Quartz Injectors (non DRC)

- Tapered Quartz Injector 1.0mm 31-808-0370
- Tapered Quartz Injector 1.2mm 31-808-0789
- Tapered Quartz Injector 1.5mm 31-807-0006
- Tapered Quartz Injector 1.8mm 31-807-0005
- Tapered Quartz Injector 2.0mm 31-807-0004

These injectors are compatible with both D-Torch and standard torch. They are suitable for torch adaptor 31-808-2825.



### Quartz Injectors (DRC Versions)

- Tapered Quartz Injector with Ball Joint, 0.85mm 31-808-3125
- Tapered Quartz Injector with Ball Joint, 1.5mm 31-808-0851
- Tapered Quartz Injector with Ball Joint, 2.0mm 31-808-0806
- Tapered Quartz Injector with Ball Joint, 2.5mm 31-808-3463

These injectors are compatible with both D-Torch and standard torch. They are suitable for torch adaptor 31-808-2824.



### HF Resistant Injectors

- Tapered Alumina Injector 1.5mm 31-807-0044
- Tapered Alumina Injector 1.8mm 31-807-0045
- Tapered Alumina Injector 2.0mm 31-807-0060
- Sapphire Injector 2.0mm 31-808-2803
- Platinum Injector 2.0mm 31-808-2972

These injectors are compatible with both D-Torch and standard torch. They are suitable for torch adaptor 31-808-2825.



### Torch Adaptor

- Cassette Mount Adaptor for Ball Joint Injector 31-808-2824

This adaptor is suitable for injectors with a ball joint.



### Torch Adaptor

- PFA Cassette Mount Adaptor 31-808-2825

This adaptor is suitable for injectors without a ball joint.



## Cones

### Sampler Cones

- Nickel Sampler PE3011-Ni
- Aluminium Sampler PE3011-Al
- Platinum Sampler PE3013-Pt



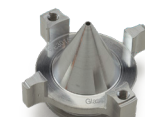
- Platinum Sampler Boron free PE3013-Pt-BF

### Skimmer Cones

- Nickel Skimmer PE3012-Ni
- Aluminium Skimmer PE3012-Al
- Platinum Skimmer PE3014-Pt



- Platinum Skimmer Boron free PE3014-Pt-BF
- Hyper Skimmer PE3015-Al

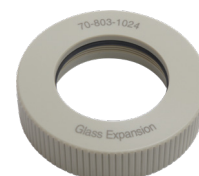


- O-ring for NexION Hyper Skimmer Cone (pack of 5) PE5115

- Screw for NexION Hyper Skimmer Cone (pack of 2) PE5116

### ConeGuard Thread Protectors

- Sampler Cone Guard For NexION 300/350 70-803-1024



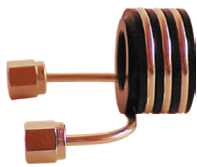
- Skimmer Cone Guard For NexION 300/350 70-803-1026



- Gasket for Sampler Cone PE5111

## RF Coils

Copper 70-900-2006C



RF Coil Installation Kit 70-900-2006T



## Common Accessories

### Elegra Argon Humidifier

Elegra Dual Two-channel Argon Humidifier 70-803-1274



### Gaurdian In-Line Filters

Guardian in-line non-return gas filter 70-803-1362

Guardian in-line sample filter 70-803-1108



### Trident Internal Standard Kit

Standard Kit 60-808-1185

Standard Kit for HF solutions 60-808-1150



## Autosampler Probes

(See page 12 for complete list of probes)

### Suitable for Cetac ASX-520

Polyimide sheathed Autosampler Probe 0.5mm ID 60-808-1186L

PTFE Encapsulated Carbon Fibre Probe 0.5mm ID 70-803-0784

PTFE Encapsulated Carbon Fibre Probe 0.75mm ID 70-803-1443

PTFE Encapsulated Carbon Fibre Probe 1.0mm ID 70-803-0793

### Suitable for PE S10 or AS93+

PTFE Encapsulated Carbon Fibre Probe 0.25mm ID 70-803-1071

PTFE Encapsulated Carbon Fibre Probe 0.5mm ID 70-803-1440

PTFE Encapsulated Carbon Fibre Probe 1.0mm ID 70-803-0816

